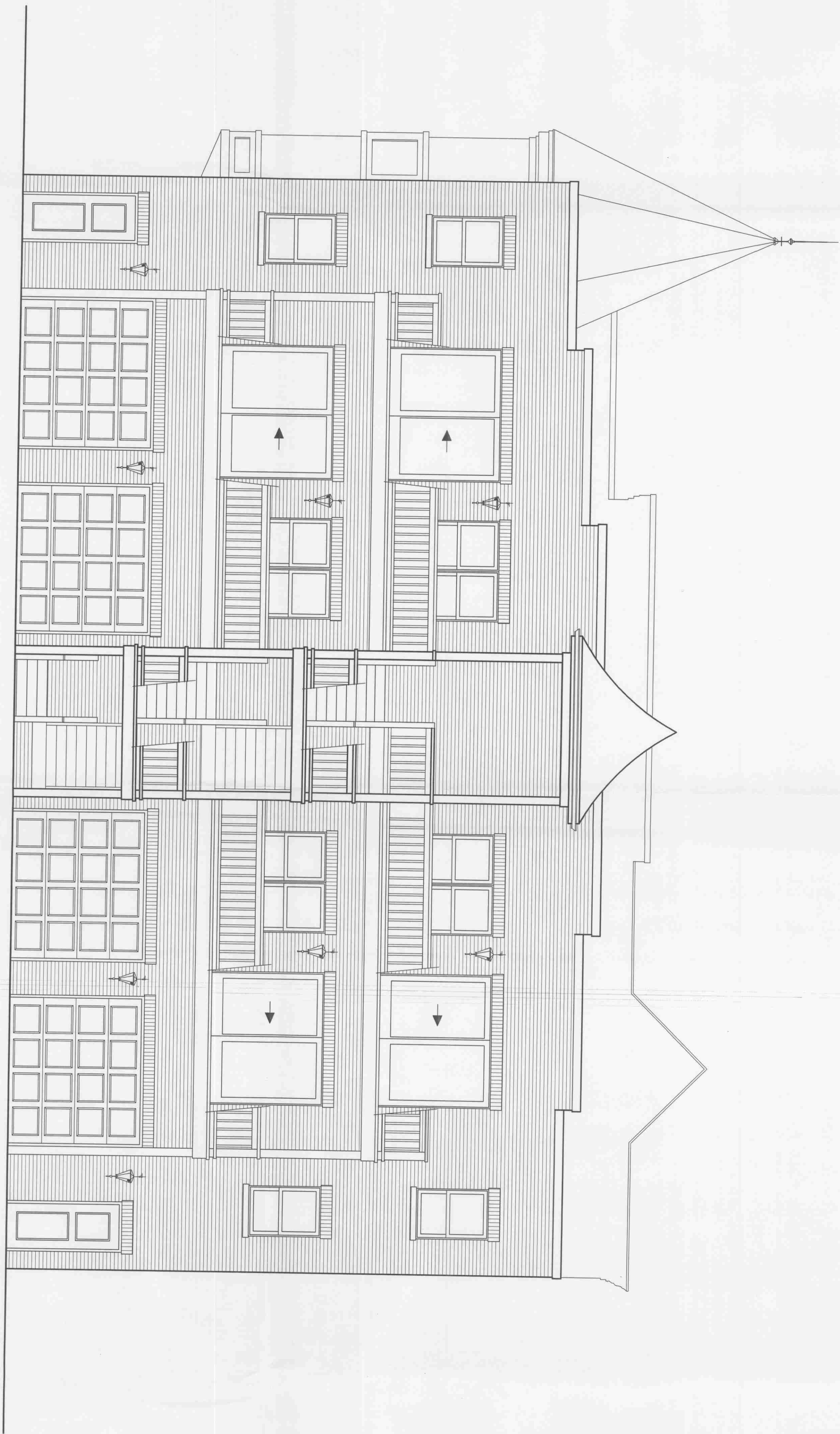


REAR ELEVATION

1/4" = 1'-0"



PRELIMINARY

OF 14

A-2

SHEET NUMBER

PREV NO. ()

PROJ NO. 260450

DATE: 10/16/06

DRAWN: EH

CHECKED: MKO

APP'D: MKO

REAR ELEVATION

WKO ARCHITECTS INC.
 14334 Town Center Dr.
 Homer Glen, Illinois 60491
 Tel (708)301-6111
 Fax (708)301-2503
 E-mail wkolsonarc@AOL.com

MIXED USED BUILDING FOR MCDUFFY'S BEACON ST.

CONDOMINIUMS ORLAND PARK, ILLINOIS

REVISIONS