

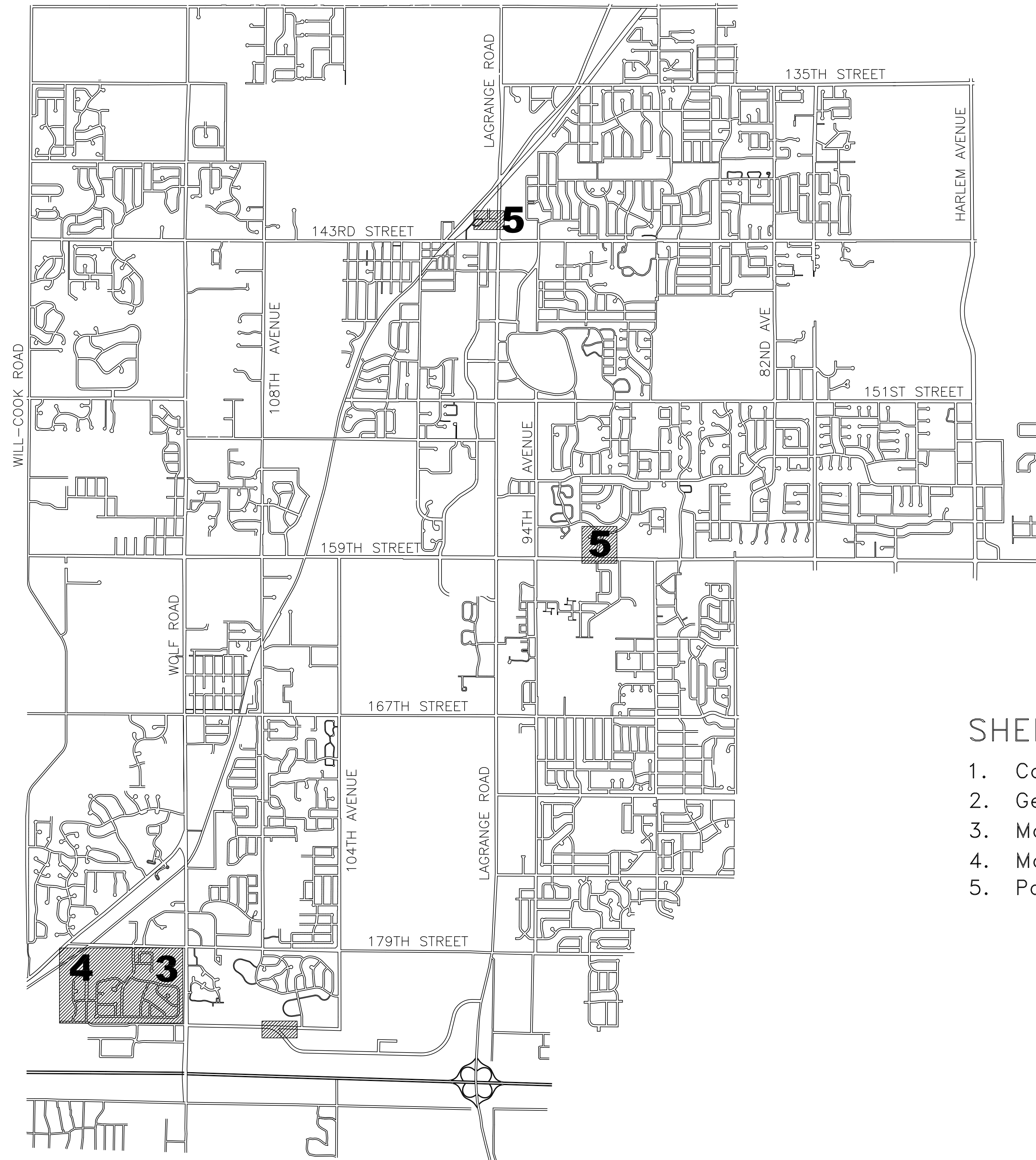
ORLAND PARK 2014 Road Improvement Program



MAYOR
DANIEL J. MCLAUGHLIN

VILLAGE CLERK
JOHN C. MEHALEK

TRUSTEES
KATHLEEN M. FENTON
JAMES V. DODGE
EDWARD G. SCHUSSLER III
PATRICIA A. GIRA
CAROLE GRIFFIN RUZICH
DANIEL T. CALANDRIELLO



SHEET INDEX

1. Cover Sheet
2. General Notes & Quantities
3. Marley Creek/ Breckenridge (East)
4. Marley Creek/ Breckenridge (West)
5. Park Hill Drive, 142nd St.-Underdrain



COVER SHEET		
SCALE: NTS	2014 Road Improvement Program	DRAWN BY: RJR
DATE: 3-10-14	Village of ORLAND PARK	REVISED:
Public Works Department		DRAWING NO. 1 OF 5

GENERAL NOTES

01. ALL CONSTRUCTION SHALL CONFORM TO THE LATEST EDITIONS OF THE ILLINOIS DEPARTMENT OF TRANSPORTATION "STANDARD SPECIFICATIONS FOR ROAD AND BRIDGE CONSTRUCTION", THE "SUPPLEMENTAL SPECIFICATIONS AND RECURRING SPECIAL PROVISIONS", THE "ILLINOIS MANUAL ON UNIFORM TRAFFIC CONTROL DEVICES FOR STREETS AND HIGHWAYS", AND THE "STANDARD SPECIFICATIONS FOR SEWER AND WATER CONSTRUCTION IN ILLINOIS."

02. THE CONTRACTOR SHALL NOTIFY ALL UTILITY COMPANIES FOR FIELD LOCATIONS OF THEIR FACILITIES PRIOR TO CONSTRUCTION. THE CONTRACTOR SHALL BE RESPONSIBLE FOR THE MAINTENANCE AND PRESERVATION OF THESE FACILITIES.

03. CONSTRUCTION STAKING WILL BE PROVIDED BY THE VILLAGE.

04. ALL NEW MANHOLES, CATCH BASINS, INLETS AND VALVE VAULTS SHALL INCLUDE A CAST IRON FRAME AND LID AS SPECIFIED IN THE PROPOSAL DETAILS. AS DIRECTED BY THE ENGINEER, THE CONTRACTOR WILL SUBSTITUTE EAST JORDAN IRON WORKS FRAME 7525 AT ALL CURB STRUCTURES REQUIRING AN OPEN GRATE.

05. ALL JOB SITES SHALL BE CLEAN AND SWEEPED AFTER FINAL PAVING. THE COST OF CLEANING AND SWEEPING SHALL BE INCIDENTAL TO THE COST OF THE PROJECT.

06. THE CONTRACTOR SHALL BE RESPONSIBLE FOR THE LEGAL DISPOSAL OF ALL WASTE MATERIAL AND ALL ASSOCIATED COSTS. THESE COSTS SHALL INCLUDE BUT ARE NOT LIMITED TO ANY REQUIRED TESTING, LAB ANALYSIS, CERTIFICATION BY A LICENSED PROFESSIONAL, AND STATE AND LOCAL TIPPING FEES ASSOCIATED WITH MEETING THE REQUIREMENTS OF PUBLIC ACT 96-1416.

07. ALL WORK SHALL BE COMPLETED IN EACH PROJECT AREA BEFORE STARTING WORK IN ANOTHER AREA, UNLESS APPROVED BY THE ENGINEER.

08. THE VILLAGE FULLY EXPECTS THE CONTRACTOR TO COMPLETE ALL WORK (EXCEPT SODDING & TOPSOIL) BY OCTOBER 15TH. THE SUCCESSFUL CONTRACTOR SHALL SUBMIT A SCHEDULE PRIOR TO STARTING ANY WORK AND SUBMIT WEEKLY PROGRESS REPORTS TO BE USED FOR UPDATING THE VILLAGE'S WEBSITE AND SHOW THAT WORK IS PROGRESSING ON SCHEDULE.

09. IT IS THE CONTRACTOR'S RESPONSIBILITY TO OBTAIN ANY AND ALL NECESSARY STATE OR COUNTY PERMITS.

10. NO CONSTRUCTION WORK SHALL BE DONE DURING STORMY, FREEZING OR INCLEMENT WEATHER, EXCEPT THAT WHICH CAN BE DONE IN A MANNER TO SECURE FIRST CLASS CONSTRUCTION THROUGHOUT, AND THEN ONLY SUBJECT TO PRIOR WRITTEN PERMISSION OF THE ENGINEER.

11. UNLESS OTHERWISE NOTED, ANY STREET SIGNS REMOVED AND/OR DAMAGED DURING, OR AS A RESULT OF THE CONSTRUCTION SHALL BE REPLACED AT THE ORIGINAL LOCATION, WITH THE ORIGINAL UNDAMAGED SIGN OR AN APPROVED EQUAL AT NO COST TO THE VILLAGE.

12. THE UNIT PRICE FOR ALL SIDEWALK, CURB, AND DRIVEWAY REMOVAL ITEMS SHALL INCLUDE SAW-CUTTING, RINSING WITH WATER AFTER SAW-CUTTING, AND REMOVAL OF EXISTING TO THE PROPOSED DEPTH.

13. SIDEWALK REMOVAL (ITEM #3) SHALL BE REMOVED BY SUCH METHODS THAT WILL NOT DAMAGE THE PARKWAY AREA BETWEEN THE CURB AND THE SIDEWALK. UNNECESSARY DAMAGE TO TREES, SOD OR DRIVEWAYS IN THIS AREA SHALL BE REPAIRED OR REPLACED AT NO COST TO THE VILLAGE.

14. IN ORDER TO MAINTAIN CONSISTENT ACCESS TO ALL PUBLIC ROADWAYS AND MULTI-FAMILY RESIDENTIAL DRIVEWAYS, SOME SECTIONS OF CURB OR SIDEWALK TO BE REMOVED MAY REQUIRE TWO SEPERATE MOBILIZATIONS. ANY ADDITIONAL COST TO COMPLETE THIS WORK IN TWO PHASES SHALL BE INCIDENTAL TO THE COST OF THE WORK BEING PERFORMED.

15. THE CONTRACTOR WILL BE RESPONSIBLE FOR DELIVERING A COPY OF ANY AND ALL MATERIAL DELIVERY TICKETS TO THE ENGINEER ON THE DAY THE MATERIAL IS DELIVERED.

16. BITUMINOUS MATERIALS (PRIME COAT) SHALL BE SS-1 APPLIED AT THE RATE OF 0.10 GALLONS/S.Y. ON THE DAY OF PAVING.

17. IT IS THE RESPONSIBILITY OF THE CONTRACTOR TO LOCATE AND PRESERVE ALL LAWN/LANDSCAPE SPRINKLER SYSTEM COMPONENTS. ANY DAMAGE SHALL BE REPAIRED OR REPLACED WITHIN SEVEN CALENDAR DAYS AT NO COST TO THE VILLAGE.

18. ALL ROADS SHALL REMAIN OPEN TO NORMAL TRAFFIC DURING CONSTRUCTION. THE CONTRACTOR SHALL PROVIDE GUIDANCE AND WARNINGS AS NEEDED TO ENSURE THE SAFE OPERATION AND PASSAGE OF ALL TRAFFIC, INCLUDING PEDESTRIANS. UNLESS OTHERWISE NOTED, THE COST OF THIS TRAFFIC CONTROL SHALL BE INCLUDED IN THE UNIT PRICE OF THE ASSOCIATED WORK.

19. THE CROSS-SECTION SURFACE PROFILE OF NEW CURB AND GUTTER SECTIONS SHORTER THAN 20 L.F. SHALL MATCH EXISTING. THE CROSS-SECTION SURFACE PROFILE OF SECTIONS LONGER THAN 20 SHALL MATCH THE CURB DETAILS IN THE CONTRACT. ALL CURB SHALL INCLUDE CONTINUOUS REBAR AS DETAILED IN THE SPECIFICATIONS. 3/4 INCH THICK PRE-MOLDED FIBER EXPANSION JOINTS WITH 3/4 INCH X 18 INCH PLAIN, ROUND STEEL DOWEL BARS SHALL BE INSTALLED IN ALL CURB EXPANSION JOINTS, AND AT ALL PC'S AND PT'S. ALTERNATE ENDS OF THE DOWEL BARS SHALL BE GREASED AND FITTED WITH METAL EXPANSION TUBES. ALL EXPANSION JOINTS MUST BE FREE OF CONCRETE FOR THE ENTIRE CURB DEPTH. ANY AGGREGATE REQUIRED TO ADJUST THE GRADE UNDER REMOVED CURB WILL NOT BE MEASURED FOR PAYMENT AND WILL BE CONSIDERED PART OF THE COST FOR COMBINATION CURB & GUTTER. REINFORCEMENT, JOINTS, AND DEPTH OF ALL CURB AND GUTTER SHALL MATCH THE SPECIFICATIONS AND DETAILS IN THE CONTRACT REGARDLESS OF EXISTING. CURB SHALL BE BACKFILLED WITHIN FIVE DAYS OF PLACEMENT.

20. PORTLAND CEMENT CONCRETE SIDEWALKS AND PATHS SHALL BE 5 INCH THICK, SET ON A 2 INCH THICK CA-6 COMPACTED STONE CUSHION. AREAS WHERE THE SIDEWALK INTERSECTS A DRIVEWAY SHALL BE REINFORCED WITH 6"x6" WIRE MESH OR OTHER REINFORCEMENT METHODS SUBJECT TO APPROVAL OF THE ENGINEER. THIS REINFORCEMENT AND ANY AGGREGATE REQUIRED TO ADJUST THE GRADE UNDER REMOVED SIDEWALK WILL NOT BE MEASURED FOR PAYMENT AND WILL BE CONSIDERED PART OF THE COST FOR SIDEWALK. THE AGGREGATE UNDER NEW SIDEWALK AND PATH WILL BE PAID FOR AS AGGREGATE BASE COURSE, TYPE B (ITEM #20). ALL SIDEWALK AND PATH SHALL BE BROOM FINISHED ACROSS IT'S ENTIRE SURFACE WITH A MAXIMUM CROSS-SLOPE OF 1/4 INCH PER FOOT.

SUMMARY OF QUANTITIES

ITEM NO.	CODED PAY ITEM NO.	ITEM	TOTAL QUANTITY	UNIT	MARLEY CREEK BRECKENRIDGE	PARK HILL DRIVE	142ND STREET- UNDERDRAIN	183RD STREET SIDEWALK**
1	42400200	PORTLAND CEMENT CONCRETE SIDEWALK 5 INCH	25,200	s.f.	22500	1000	0	1700
2	42400800*	DETECTABLE WARNINGS	1,184	s.f.	1000	160	0	24
3	44000600	SIDEWALK REMOVAL	23,950	s.f.	22500	1000	0	450
4	60608300	COMBINATION CONCRETE CURB AND GUTTER,TYPE M-2.12	9,520	l.f.	9200	300	20	0
5	60603800	COMBINATION CONCRETE CURB AND GUTTER,TYPE B-6.12	510	l.f.	450	60	0	0
6	44000500	COMBINATION CURB AND GUTTER REMOVAL	10,030	l.f.	9650	360	20	0
7	*	CONCRETE SLAB RAISING	500	s.f.	500	0	0	0
8	XX006395*	SHOTCRETE CURB & GUTTER REPAIR	2,604	l.f.	2500	90	0	14
9	XX003435*	P.C.C. DRIVEWAY REMOVAL & REPLACEMENT, 6"	350	s.f.	350	0	0	0
10	XX006947*	H.M.A. DRIVEWAY REMOVAL & REPLACEMENT, 3"	144	s.y.	120	24	0	0
11	XX004774*	BRICK DRIVEWAY REMOVAL & REPLACEMENT	50	s.f.	50	0	0	0
12	*	IMPRINTED COLORED PCC DRIVEWAY REMOVAL & REPLACEMENT	40	s.f.	20	0	20	0
13	*	IMPRINTED COLORED HMA DRIVEWAY REMOVAL & REPLACEMENT	5	s.y.	5	0	0	0
14	X0326806*	WASHOUT BASIN	3	ea.	1	1	0	1
15	20200100*	EARTH EXCAVATION	2,080	c.y.	2000	30	0	50
16	44000167	HOT-MIX ASPHALT SURFACE REMOVAL, 4 1/2"	74,200	s.y.	70800	3400	0	0
17	40600100	BITUMINOUS MATERIALS (PRIME COAT)	7,440	gal.	7100	340	0	0
18	*	CLASS D PATCHES- VARIOUS TYPES	14	ton	0	0	12	2
19	*	CLASS D PATCHES- VARIOUS TYPES- OFFSITE	1,500	ton	0	0	0	0
20	35101400*	AGGREGATE BASE COURSE, TYPE B	32	ton	8	2	0	22
21	35800100	PREPARATION OF BASE	10,680	s.y.	10000	680	0	0
22	35800200	AGGREGATE BASE REPAIR	3,400	ton	3200	200	0	0
23	40201000*	AGGREGATE FOR TEMPORARY ACCESS	240	ton	200	40	0	0
24	20800150*	TRENCH BACKFILL, CA-6	36	ton	20	0	16	0
25	20800150*	TRENCH BACKFILL, CA-7	86	ton	60	6	20	0
26	40603080	HOT-MIX ASPHALT BINDER COURSE, IL-19.0, N50	12,880	ton	12300	580	0	0
27	40603310	HOT-MIX ASPHALT SURFACE COURSE, MIX "C", N50	8,480	ton	8100	380	0	0
28	25000110*	SEEDING, CLASS 1A (& TOPSOIL)	370	s.y.	30	0	0	340
29	25100630	EROSION CONTROL BLANKET	370	s.y.	30	0	0	340
30	25200100*	SODDING (& TOPSOIL)	1,880	s.y.	1750	120	10	0
31	28000510	INLET FILTERS	139	ea.	132	6	1	0
32	60109520*	PIPE UNDERDRAINS FABRIC LINED TRENCH, 6"	890	l.f.	600	50	240	0
33	60207005*	CATCH BASINS, TYPE C, FRAME & LID	2	ea.	1	0	1	0
34	60300305*	FRAMES AND LIDS TO BE ADJUSTED (STEEL RING)	2	ea.	2	0	0	0
35	60255500*	MANHOLES TO BE ADJUSTED	64	ea.	60	4	0	0
36	60257900*	MANHOLES TO BE RECONSTRUCTED, BLOCK	4	ea.	3	1	0	0
37	60257900*	MANHOLES TO BE RECONSTRUCTED, CONE SECTION	1	ea.	1	0	0	0
38	60257900*	MANHOLES TO BE RECONSTRUCTED, FLAT SLAB TOP	1	ea.	1	0	0	0
39	*	MANHOLE TO BE MORTARED	67	ea.	65	2	0	0
40	88600100	DETECTOR LOOP, TYPE I	200	l.f.	0	200	0	0
41	*	TRAFFIC CONTROL AND PROTECTION, SPECIAL	1	l.s.	0	0	0	0
42	78000100	THERMOPLASTIC PAVEMENT MARKING- LETTERS & SYMBOLS	73	s.f.	0	37	36	0
43	78000200	THERMOPLASTIC PAVEMENT MARKING- LINE 4"	70	l.f.	0	70	0	0
44	78000400	THERMOPLASTIC PAVEMENT MARKING- LINE 6"	3,580	l.f.	2900	580	100	0
45	78000650	THERMOPLASTIC PAVEMENT MARKING- LINE 24"	115	l.f.	60	55	0	0

* SEE SPECIAL PROVISION

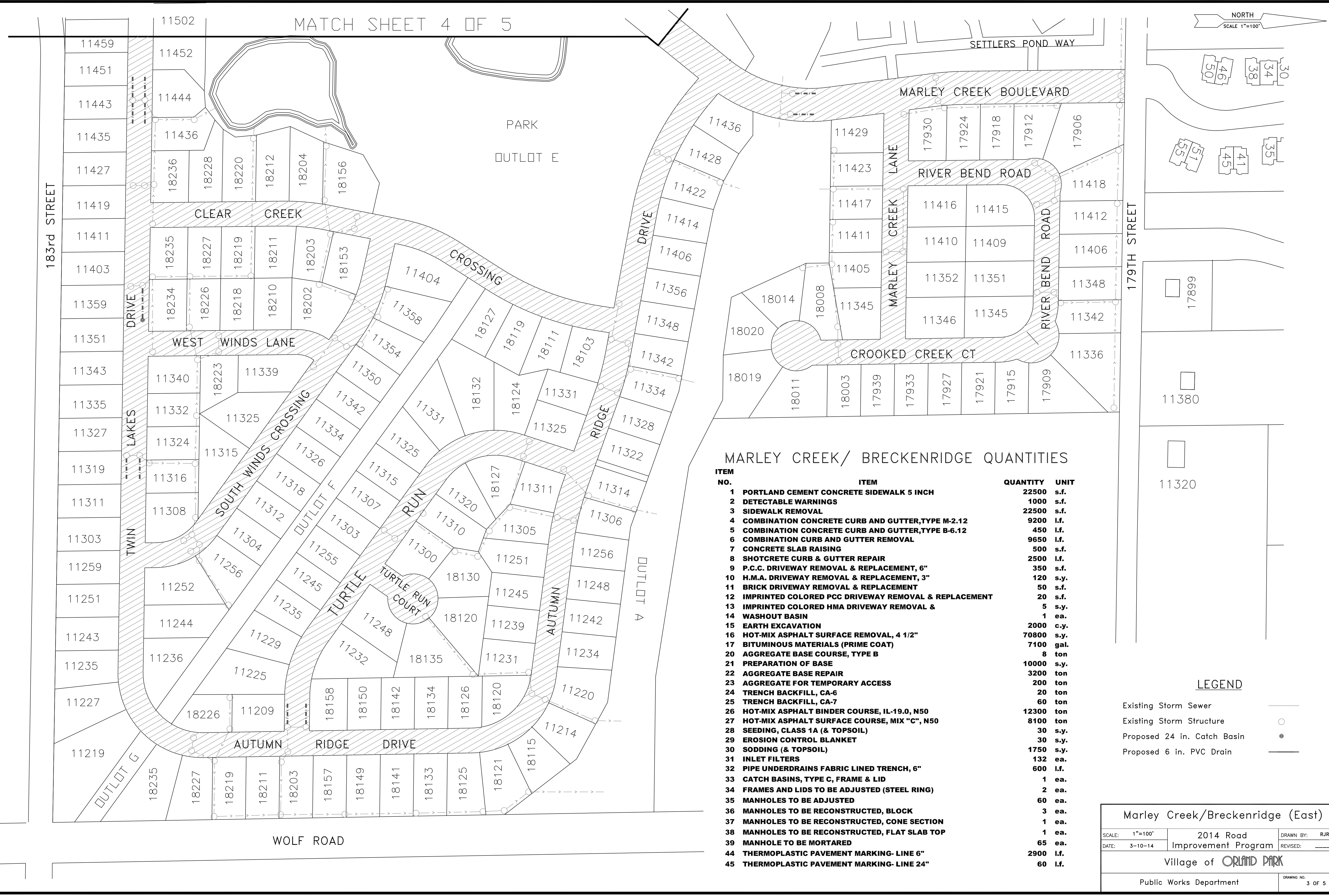
** NOT INCLUDED IN PLAN SET- SEE SECTION III IN REQUEST FOR PROPOSAL.

HOT-MIX ASPHALT MIXTURE REQUIREMENTS

Mixture Type	AC Type	Air Voids
Pavement Resurfacing		
Hot-Mix Asphalt Surface Course, Mix C, N50	PG 64-22	4% @ 50 Gyr.
Hot-Mix Asphalt Binder Course, IL-19.0, N50	PG 64-22	4% @ 50 Gyr.
The unit weight used to calculate all Hot-Mix Asphalt Surface Mixture quantities is 112 Pounds/S.Y./Inch		

Notes and Quantities

SCALE: NONE	2014 Road Improvement Program	DRAWN BY: RJR
DATE: 3-10-14		REVISED:
Village of ORLAND PARK		
Public Works Department		DRAWING NO. 2 OF 5



MARLEY CREEK/ BRECKENRIDGE QUANTITIES

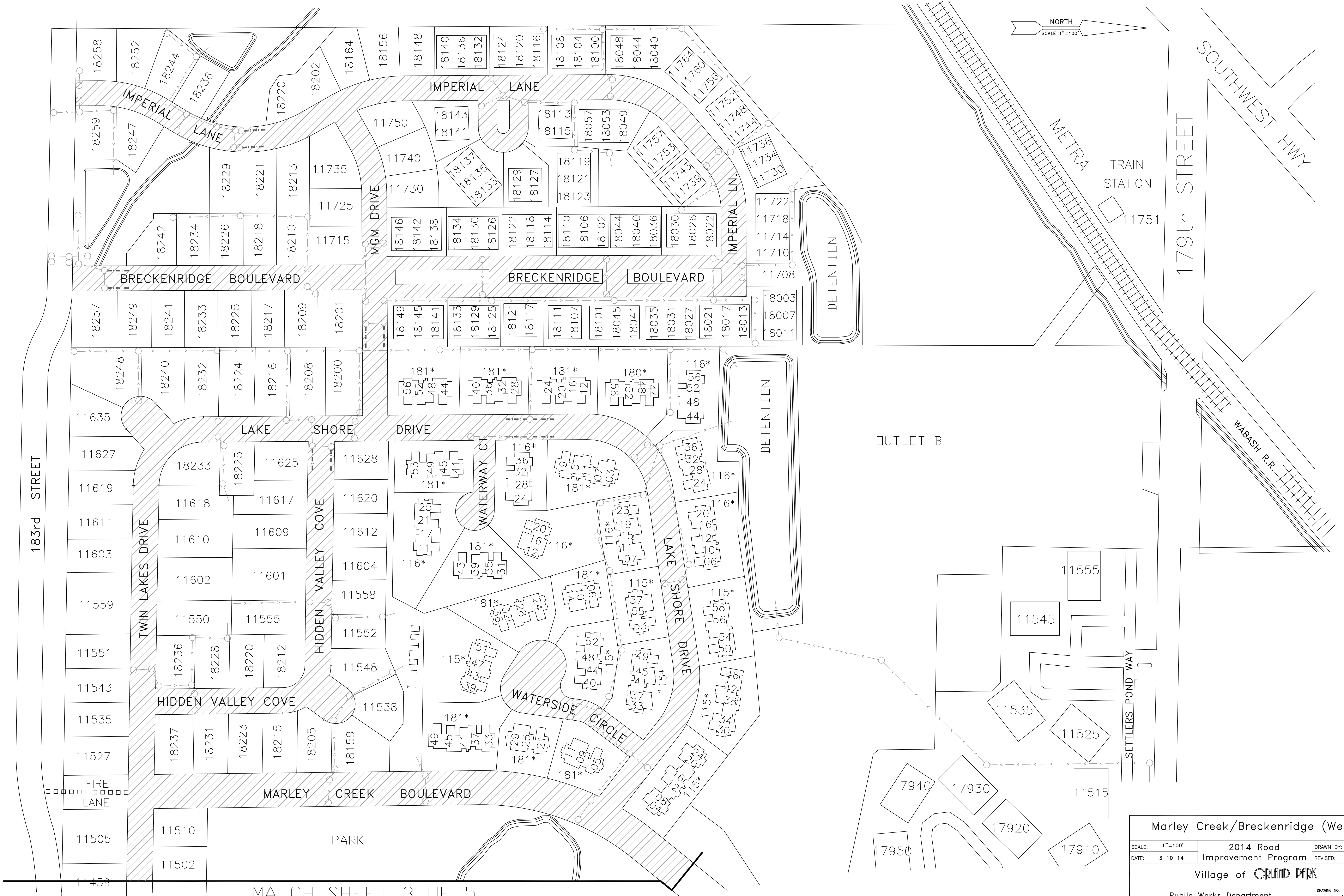
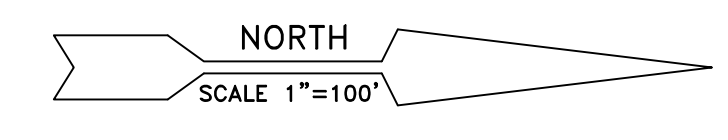
ITEM NO.	ITEM	QUANTITY	UNIT
1	PORTLAND CEMENT CONCRETE SIDEWALK 5 INCH	22500	s.f.
2	DETECTABLE WARNINGS	1000	s.f.
3	SIDEWALK REMOVAL	22500	s.f.
4	COMBINATION CONCRETE CURB AND GUTTER,TYPE M-2.12	9200	l.f.
5	COMBINATION CONCRETE CURB AND GUTTER,TYPE B-6.12	450	l.f.
6	COMBINATION CURB AND GUTTER REMOVAL	9650	l.f.
7	CONCRETE SLAB RAISING	500	s.f.
8	SHOTCRETE CURB & GUTTER REPAIR	2500	l.f.
9	P.C.C. DRIVEWAY REMOVAL & REPLACEMENT, 6"	350	s.f.
10	H.M.A. DRIVEWAY REMOVAL & REPLACEMENT, 3"	120	s.y.
11	BRICK DRIVEWAY REMOVAL & REPLACEMENT	50	s.f.
12	IMPRINTED COLORED PCC DRIVEWAY REMOVAL & REPLACEMENT	20	s.f.
13	IMPRINTED COLORED HMA DRIVEWAY REMOVAL &	5	s.y.
14	WASHOUT BASIN	1	ea.
15	EARTH EXCAVATION	2000	c.y.
16	HOT-MIX ASPHALT SURFACE REMOVAL, 4 1/2"	70800	s.y.
17	BITUMINOUS MATERIALS (PRIME COAT)	7100	gal.
20	AGGREGATE BASE COURSE, TYPE B	8	ton
21	PREPARATION OF BASE	10000	s.y.
22	AGGREGATE BASE REPAIR	3200	ton
23	AGGREGATE FOR TEMPORARY ACCESS	200	ton
24	TRENCH BACKFILL, CA-6	20	ton
25	TRENCH BACKFILL, CA-7	60	ton
26	HOT-MIX ASPHALT BINDER COURSE, IL-19.0, N50	12300	ton
27	HOT-MIX ASPHALT SURFACE COURSE, MIX "C", N50	8100	ton
28	SEEDING, CLASS 1A (& TOPSOIL)	30	s.y.
29	EROSION CONTROL BLANKET	30	s.y.
30	SODDING (& TOPSOIL)	1750	s.y.
31	INLET FILTERS	132	ea.
32	PIPE UNDERDRAINS FABRIC LINED TRENCH, 6"	600	l.f.
33	CATCH BASINS, TYPE C, FRAME & LID	1	ea.
34	FRAMES AND LIDS TO BE ADJUSTED (STEEL RING)	2	ea.
35	MANHOLES TO BE ADJUSTED	60	ea.
36	MANHOLES TO BE RECONSTRUCTED, BLOCK	3	ea.
37	MANHOLES TO BE RECONSTRUCTED, CONE SECTION	1	ea.
38	MANHOLES TO BE RECONSTRUCTED, FLAT SLAB TOP	1	ea.
39	MANHOLE TO BE MORTARED	65	ea.
44	THERMOPLASTIC PAVEMENT MARKING- LINE 6"	2900	l.f.
45	THERMOPLASTIC PAVEMENT MARKING- LINE 24"	60	l.f.

LEGEND

- Existing Storm Sewer
- Existing Storm Structure
- Proposed 24 in. Catch Basin
- Proposed 6 in. PVC Drain

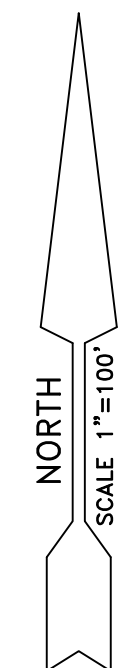
Marley Creek/Breckenridge (East)

SCALE: 1"=100'	2014 Road Improvement Program	DRAWN BY: RJR
DATE: 3-10-14		REVISED: _____
Village of ORLAND PARK		
Public Works Department		DRAWING NO. 3 OF 5



MATCH SHEET 3 OF 5

Marley Creek/Breckenridge (West)		
SCALE: 1"=100'	2014 Road Improvement Program	DRAWN BY: RJR
DATE: 3-10-14		REVISED: _____
Village of ORLAND PARK		
Public Works Department		DRAWING NO. 4 OF 5



142ND STREET- UNDERDRAIN QUANTITIES

ITEM NO.	ITEM	QUANTITY	UNIT
4	COMBINATION CONCRETE CURB AND GUTTER,TYPE M-2.12	20	l.f.
6	COMBINATION CURB AND GUTTER REMOVAL	20	l.f.
12	IMPRINTED COLORED PCC DRIVEWAY REMOVAL & REPLACEMENT	20	s.f.
18	CLASS D PATCHES- VARIOUS TYPES	12	ton
24	TRENCH BACKFILL, CA-6	16	ton
25	TRENCH BACKFILL, CA-7	20	ton
30	SODDING (& TOPSOIL)	10	s.y.
31	INLET FILTERS	1	ea.
32	PIPE UNDERDRAINS FABRIC LINED TRENCH, 6"	240	l.f.
33	CATCH BASINS, TYPE C, FRAME & LID	1	ea.
42	THERMOPLASTIC PAVEMENT MARKING- LETTERS & SYMBOLS	36	s.f.
44	THERMOPLASTIC PAVEMENT MARKING- LINE 6"	100	l.f.

LEGEND

- Existing Storm Sewer
- Existing Storm Structure
- Proposed 24 in. Catch Basin
- Proposed 6 in. PVC Drain

PARK HILL DRIVE QUANTITIES

ITEM NO.	ITEM	QUANTITY	UNIT
1	PORTLAND CEMENT CONCRETE SIDEWALK 5 INCH	1000	s.f.
2	DETECTABLE WARNINGS	160	s.f.
3	SIDEWALK REMOVAL	1000	s.f.
4	COMBINATION CONCRETE CURB AND GUTTER,TYPE M-2.12	300	l.f.
5	COMBINATION CONCRETE CURB AND GUTTER,TYPE B-6.12	60	l.f.
6	COMBINATION CURB AND GUTTER REMOVAL	360	l.f.
8	SHOTCRETE CURB & GUTTER REPAIR	90	l.f.
10	H.M.A. DRIVEWAY REMOVAL & REPLACEMENT, 3"	24	s.y.
14	WASHOUT BASIN	1	ea.
15	EARTH EXCAVATION	30	c.y.
16	HOT-MIX ASPHALT SURFACE REMOVAL, 4 1/2"	3400	s.y.
17	BITUMINOUS MATERIALS (PRIME COAT)	340	gal.
20	AGGREGATE BASE COURSE, TYPE B	2	ton
21	PREPARATION OF BASE	680	s.y.
22	AGGREGATE BASE REPAIR	200	ton
23	AGGREGATE FOR TEMPORARY ACCESS	40	ton
25	TRENCH BACKFILL, CA-7	6	ton
26	HOT-MIX ASPHALT BINDER COURSE, IL-19.0, N50	580	ton
27	HOT-MIX ASPHALT SURFACE COURSE, MIX "C", N50	380	ton
30	SODDING (& TOPSOIL)	120	s.y.
31	INLET FILTERS	6	ea.
32	PIPE UNDERDRAINS FABRIC LINED TRENCH, 6"	50	l.f.
35	MANHOLES TO BE ADJUSTED	4	ea.
36	MANHOLES TO BE RECONSTRUCTED, BLOCK	1	ea.
39	MANHOLE TO BE MORTARED	2	ea.
40	DETECTOR LOOP, TYPE I	200	l.f.
42	THERMOPLASTIC PAVEMENT MARKING- LETTERS & SYMBOLS	37	s.f.
43	THERMOPLASTIC PAVEMENT MARKING- LINE 4"	70	l.f.
44	THERMOPLASTIC PAVEMENT MARKING- LINE 6"	580	l.f.
45	THERMOPLASTIC PAVEMENT MARKING- LINE 24"	55	l.f.



Park Hill Drive 142nd Street- Underdrain		
SCALE: 1"=100'	2014 Road Improvement Program	DRAWN BY: RJR
DATE: 3-10-14		REVISED: _____
Village of ORLAND PARK		
Public Works Department		DRAWING NO. 5 OF 5