

ORLAND PARK

2016 ANNUAL REPORT





Trustee Michael Carroll, Trustee Patricia Gira, Village Clerk John Mehalek, Mayor Daniel McLaughlin, Trustee Kathleen Fenton, Trustee Carole Griffin Ruzich, Trustee Daniel Calandriello, Trustee James Dodge



Mayor Dan McLaughlin cuts the ceremonial ribbon at the ribbon cutting ceremony at the Village's newest facility, Orland Park Health and Fitness Center (OPHFC). Pictured are (l-r) OPHFC Member Service Manager Charmaine O' Sullivan, Orland Park Trustee Michael Carroll, Orland Park Trustee Kathy Fenton, Mayor Dan McLaughlin, Ashley Rains and David Brainerd, Center Director of Orland Park Health & Fitness Center.

YEAR IN REVIEW



This past year was a busy and fruitful one for Orland Park. The community continues to maintain its status as one of the most progressive in the country as well as the location of choice for residents and new and existing businesses.

In December, we were excited to celebrate the grand opening of the University of Chicago Center for Advanced Care at Orland Park. This facility brought in a number of construction jobs, in addition to the more than 100 employees and 20 physicians, bringing an outstanding Chicago medical facility to downtown Orland Park.

The completion of the LaGrange Road Widening Project made it easier to travel through town, and get in and out of the many stores and restaurants. The village will be making its aesthetic additions in the spring, and we will see full completion by next summer. Again, we are grateful for everyone's cooperation and patience with this state project that benefits all of Orland Park.

Because of the village's strong financial position, the Orland Park Village Board approved a rebate of \$2.2 million for eligible residents. The board began rebating property taxes in 2003 and, despite a suspension of the program during the economic downturn, the village is again in a strong financial position to offer the rebate. We have rebated a portion of residents' property tax bills 12 of the past 15 years. Rebate payments will be distributed in mid-March to eligible village residents who applied before the extended Dec. 20, 2016 deadline. To date, Orland Park has returned \$38.9 million dollars to village residents.

The Orland Park Village Board abated a portion of its property tax levy, which benefits residents and local businesses. An abatement reduces the amount of the overall property tax levy. A reduced levy, given a constant equalized assessed valuation, leads to reduced property tax bills. The amount of an individual taxpayer's tax bill is based on the taxpayer's EAV, as compared to the Village's overall EAV.

We have had a great response to our #OPKind social media campaign. Thank you to who took the time to recognize the kindness of others. We highlighted some of these kind individuals at the March 9 State of the Village Address.

As you may know from the local media coverage, the Village of Orland Park saved the former Palos Health and Fitness Center from demolition, and it is now the village's newest facility. I am especially happy that we were able to save this building, with its indoor pool, eliminating the cost of adding an indoor pool at the village's Sportsplex. We look forward to being able to offer village programs and services at the newly re-named Orland Park Health & Fitness Center.

Thank you to those who were able to join us on March 9 for the State of the Village Address at Sandburg High School. We were excited to share all that's happened in the village during the past year. Stay updated on village happenings by visiting the village website at www.orlandpark.org and take a look at the village's social media outlets for more information.

Sincerely,

Daniel J. McLaughlin, Mayor

BOARD MEETING DATES

- March 6
- March 20
- April 3
- April 17
- May 1
- May 15
- June 5
- June 19
- July 3
- July 17
- August 7
- August 21
- September 5
- September 18
- October 2
- October 16
- November 6
- November 20
- December 4
- December 18

BOARD OF TRUSTEES

Daniel McLaughlin
Mayor

John Mehalek
Village Clerk

TRUSTEES

Kathleen Fenton
Development Services,
Planning & Engineering

Carole Griffin Ruzich
Finance

James Dodge
Mayor Pro Tem;
Technology, Innovation and
Performance Improvement

Daniel Calandriello
Public Safety

Patricia Gira
Parks & Recreation

Michael Carroll
Public Works

Timothy J. McCarthy
Interim Village Manager



LIVABILITY

We do our best to ensure that the Village of Orland Park is a community that offers its residents a **safe** environment in which to live in, an abundance of **options** for a place to call home and **accessibility** to all that is needed to make the community the best it can be.



WE'RE LISTENING

We want to hear from you! There are many ways to **communicate** with village staff and your local representatives. Visit any of the village buildings, give us a **call**, interact with us on **social media** or even send us an **email**. We appreciate and encourage community input.



FISCALLY STRONG

Maintaining **fiscal strength** for the community is a main priority. The Finance Department **safeguards** assets through adherence to sound financial management practices and procedures. The Comprehensive Annual Financial Report and Budget are available online at www.orlandpark.org.

TRANSPARENCY

MAINTAINING 100 PERCENT TRANSPARENCY IS SOMETHING THE VILLAGE OF ORLAND PARK CONTINUES TO ACHIEVE YEAR AFTER YEAR.

"The village has set a new standard for proactive online transparency of local government," said Brian Costin, director of outreach at the Illinois Policy Institute. "I applaud their efforts, and hope that other communities across Illinois will take notice of Orland Park's transparency efforts and strive to be accountable to their own citizens and taxpayers."

Orland Park is the first municipality in the State of Illinois to score 100 percent in transparency from the Illinois Policy Institute (IPI). The Institute created a 10-point transparency checklist to hold government and elected officials accountable to the citizens and taxpayers, providing a "best practices" framework intended to improve government transparency throughout the state.

It is the Village of Orland Park's objective to go above and beyond IPI's requirements, using the transparency checklist as a foundation for open government.

"The village has set a new standard for proactive online transparency of local government," said Brian Costin, director of outreach at the Illinois Policy Institute. "I applaud their efforts, and hope that other communities across Illinois will take notice of Orland Park's transparency efforts and strive to be accountable to their own citizens and taxpayers."

The Village of Orland Park was recently evaluated by Ballotpedia and received an A+ for its online transparency. Ballotpedia is an online encyclopedia on American politics and elections. Their goal is to connect people to politics by providing accurate and objective information at the local, state, and federal level.



TABLE OF CONTENTS

Year In Review1
 Transparency.....3
 Awards and Honors.....4
 Fiscal Strength6

Safe Community.....8
 Building Community.....10
 #OPKind14
 National Citizen Survey18

Orland Park Health and Fitness.....22
 Road Update.....28
 I-80 Corridor Development.....28
 Village Finances32

2016 AWARDS & HONORS

WE ARE PROUD TO ANNOUNCE THAT THE VILLAGE OF ORLAND PARK HAS RECEIVED THE FOLLOWING AWARDS IN 2016:

The village's Recreation Department received a first place marketing award at the Illinois Park and Recreation Association and the Illinois Association of Park Districts Agency Showcase. The department was honored for its promotional pieces for the Arts Commission Concert Series.



CHIEF OF THE YEAR AWARD

Orland Park Chief of Police Tim McCarthy was named the first recipient of the Chief of the Year Award by the Illinois Association of Chiefs of Police. The award honors leadership in law enforcement, leadership within the Orland Park Police Department and service to the chief's association.



SIMPLY THE BEST

Village of Orland Park's Centennial Park Aquatic Center named to Chicago Magazine's Best of 2016 list as public pool.



2016 STARGUARD ELITE AWARD FROM STARFISH AQUATICS INSTITUTE

The Village of Orland Park received the 2016 StarGuard award in recognition of CPAC's efforts as above the industry standard, reflecting a proactive approach to aquatic risk prevention.



MOST SKYHAWKS SPORTS ACADEMY REGISTRATIONS

The village's Sportsplex was number one in Illinois with the most registrations for Skyhawks Sports Academy programs. The organization provides programs for t-ball, soccer, basketball, football, and multi-sport camps.



TOP 10 ICE RINK

Winter Wonderland Ice Rink was named among the top 10 ice rinks in the Chicago area by local go-to blogger mommynearest.com.

POWERPLAY! GRANT AWARDED

The Recreation Department was awarded a \$1,000 "PowerPlay! Beyond School" grant for the 2016 After School Pals and Summer Pals Programs. This grant program involves implementing a model program that focuses on health, nutrition and fitness for children ages K-5th grade and 6th-12th grade.

DISTINGUISHED BUDGET AWARD



Since fiscal year 2006, the Finance Department has been awarded the GFOA Distinguished Budget Presentation Award. To qualify for this award, the village's budget document was judged to be outstanding in several categories including:

- ❖ Financial policy document
- ❖ Operations guide
- ❖ Communications device

CERTIFICATE OF ACHIEVEMENT FOR EXCELLENCE IN FINANCIAL REPORTING



The Village of Orland Park once again received the Certificate of Achievement for Excellence in Financial Reporting Program (CAFR Program) for fiscal year 2015. The village has been a recipient of this award every year for over 25 years.

CPAC AWARDED 5-STAR SAFETY RATING

The Village of Orland Park Centennial Park Aquatic Center earned a five-star safety rating during all three of the risk management audits in 2016. The Starfish Aquatics Institute awarded the water park the highest rating possible following the unannounced risk management audits by the national non-profit water safety organization.

SAFEST COMMUNITIES

The Village of Orland Park was ranked 13 out of the state's 50 safest communities by backgroundcheck.org. The organization compiled the list of the 50 safest cities in Illinois based on FBI violent crime stats and proprietary BackgroundChecks.org research data.

PEOPLE'S TELLY AWARD

The Orland Park Police Department's "Plan Prepare Act" active shooter training video—distributed to area schools, churches and businesses—received national recognition by being awarded the coveted Bronze People's Telly Award winner in the Non-Broadcast Production Category.



Trustee Kathleen Fenton accepts the Patricia Chase Magon Municipal Leadership Award on behalf of the Village of Orland Park from representatives of the Chicago Southland Contention and Visitor's Bureau.

PATRICIA CHASE MAGON MUNICIPAL LEADERSHIP AWARD

The Chicago Southland Convention and Visitor's Bureau presented the village with the Patricia Chase Magon Municipal Leadership Award for its development of LaGrange Road, by turning it into an economic driver with updated shops and restaurants. In addition, the award noted Orland Park hosting Illinois' first professional log rolling competition, which attracted visitors from all over the region. The June 11 event was held at Lake Sedgewick in Centennial Park, and featured 19 log rolling competitors from the United States and Canada.

The Patricia Chase Magon Municipal Leader of the Year Award highlights a community's vision, service, and outstanding contributions to the tourism and hospitality industries in the Chicago Southland.

The Chicago Southland CVB's 30th annual award luncheon featured keynote speaker Governor Bruce Rauner. ♦



FISCAL STRENGTH

One of the village's most important responsibilities is being fiscally responsible and accountable to residents. This means spending wisely and doing more with less. Since 2009, the village has saved approximately \$ 6.3 million in future interest costs by refunding portions of its outstanding general obligation debt. The refunding process is much like a homeowner going through a refinancing process in order to decrease the interest rate paid on their mortgage.

The village is an annual recipient of the Government Finance Officers Association (GFOA) Certificate of Achievement for Excellence in Financial Reporting and Distinguished Budget Presentation Awards. The Village of Orland Park received an **AA+ bond rating from Standard and Poor's**, an **Aa1 from Moody's** as well as national recognition for its fiscal management, budgeting policies and financial reporting.

Operating and capital budgets for fiscal year 2017 are balanced without the implementation of any new revenue services. We continue to maintain fund balances in the village's operating and capital funds according to board approved fund balance policy levels.

The village board approved a 2016 property tax levy, to be paid by village residents in 2017, that was equal to the village's 2015 property tax levy. The tax levy has remained flat for six straight years. Including the amount that will be mailed to eligible applicants in March 2017, **the village has rebated approximately \$39 million over 12 of the last 15 years.**

The annual rebate is possible due to the village's commitment to fiscal responsibility, doing more with less and avoiding deficit spending.

The mayor and village board are dedicated to running an open and transparent form of government. For residents, that means they are given a seamless system of checks and balances wherein all information is readily available for viewing on the village website.

Any questions regarding village finances can be directed to (708)403-6100. ♦

NEW INVESTMENT IN ORLAND PARK

Since 2009, residential and commercial development has added approximately \$418 million in market value to the village's tax base.

Tax Year	Assessed Value of New Residential Property	Tax Year	Assessed Value of New Commercial Property
2007	56,013,168	2007	280,065,840
2008	83,939,733	2008	419,698,665
2009	26,028,925	2009	130,144,625
2010	18,055,687	2010	90,278,435
2011	8,114,649	2011	40,573,245
2012	8,344,835	2012	41,724,175
2013	8,884,542	2013	44,422,710
2014	6,346,821	2014	31,734,105
2015	7,761,600	2015	38,808,000

Total addition to tax base 2007 - 2015
@ Assessed Value = \$83,537,059
MV @ 10% Assessment Level

Total addition to tax base 2007 - 2015
@ Market Value (assuming 36% Assessment Level) -
\$417,685,295



Mayor Dan McLaughlin and representatives from the Orland Park Police Department meet with residents at Mariano's in Orland Park.

SAFE COMMUNITY

PARTNERING WITH THE COMMUNITY

- The Orland Park Police Department is committed to responding to the needs of and establishing a close working relationship with the community as a department-wide philosophy and not just to a specific problem.
- All employees share responsibility for achieving community engagement objectives and play a vital role in the overall community relations effort of the department. The success of community relations strategies and tactics depend on all police employees working together in partnership with the community.
- In 2016, the Orland Park Police Department hosted numerous community events. Several Cook Out with the Cops events were held in village neighborhoods, Coffee with a Cop gatherings at local restaurants as well as safety talks at schools, worship centers and nursing homes.
- The Citizen and Teen Police Academies, held annually, offers an inside perspective into law enforcement within the Village of Orland Park.

SAFETY THROUGH INNOVATION

- **Drone Capabilities** The Orland Park Police Department was the fifth law enforcement agency in the United States to receive specialized jurisdictional authority to operate a drone to locate missing persons, fleeing offenders and surveil natural and manmade disasters.
- **Simulation Technology** In April, the Orland Park Police Department purchased a state of the art Response to Resistance simulator. The simulator will assist in evaluating decision-making, judgment and reaction by officers to real life encounters. The system offers low-light simulation and 3D capabilities to enhance the realism of over 500 pre-programed scenarios.
- **Plan Prepare Act** In June of 2016, the Justice Technology Information Center (JTIC) wrote an article on the nationally awarded Orland Park Police Department's "Plan Prepare Act" active shooter training video. As a result, agencies across the nation have requested copies of the video to train their officers and school personnel. Members of the department participated in a countywide active shooter and mass casualty tabletop exercise consisting of elected officials and area police and fire departments. The exercise was held at St. Xavier University, South Campus in Orland Park in April of 2016.

For more information, see the 2016 Orland Park Police Annual Report at www.orlandpark.org. ♦



APPEARANCE IMPROVEMENT GRANT

THE APPEARANCE IMPROVEMENT GRANT IS A FINANCIAL ASSISTANCE GRANT AVAILABLE TO ALL COMMERCIAL AND LANDMARK PROPERTIES IN THE VILLAGE OF ORLAND PARK TO IMPROVE THEIR STOREFRONTS AND EXTERIOR APPEARANCES.

29 ORLAND SQUARE DRIVE

Grant Awarded: \$20,000 | Total Project Cost: \$68,000



PROJECT SCOPE: The renovation of an existing building and modification of the site plan, including improved pedestrian

connections and landscaping, in order to modernize the aesthetics of the property and accommodate a multi-tenant building configuration. Renovations included new building parapets and towers, new storefront windows on all four elevations, new interior sidewalks and connections to an adjacent crosswalk, a new sidewalk along 149th Street, a new outdoor seating area, enhanced site landscaping and a new masonry garbage enclosure.

24 ORLAND SQUARE DRIVE

Grant Awarded: \$18,698.13 | Total Project Cost: \$37,396.26



PROJECT SCOPE: The renovation of the façade, landscaping and site amenities of a multi-tenant

building located at 24 Orland Square Drive. Renovations included a metal panel façade siding system, new storefront windows on west and south elevations, a new outdoor seating area, new exterior light fixtures, enhanced site landscaping and a new masonry garbage enclosure. Blaze Pizza and Pearle Vision currently occupy the space.

9925 143RD STREET

Grant Awarded: \$3,987.50 | Total Project Cost: \$7,975



PROJECT SCOPE: Repainting of the exterior of the building and installation of new signage at

9925 W. 143rd Street. The building is listed as a contributing structure to the Old Orland Historic District and will include two new commercial tenants.

TWIN TOWERS CHAPEL PAINTING

Grant Awarded: \$1,387.50 | Total Project Cost: \$2,775



PROJECT SCOPE: Re-painting the south and west elevations of the Twin Towers Sanctuary located at 9967 W. 144th Street. In addition, some minor maintenance work and the repair or replacement of damaged trim and siding will be completed. The building is listed on the National Register of Historic Places and is considered a

contributing structure to the Old Orland Historic District and an Orland Park Landmark. Work is set to begin in spring of 2017.

BUILDING COMMUNITY

IN 2016, THE VILLAGE OF ORLAND PARK SAW TREMENDOUS GROWTH AND DEVELOPMENT AS 90 NEW BUSINESSES CHOSE ORLAND PARK.

New Businesses 2016



University of Chicago Center for Advanced Care



Mariano's



Gizmo's Fun Factory



Burger 21



Blaze Pizza



Sky Zone Trampoline Park

ORLAND PARK BEFORE AND AFTER



7170 159TH STREET

Before:

- ❖ Former Avis/Budget Rental Car Business

After:

- ❖ A new 6,600 square foot multi-tenant commercial building
- ❖ Tenants:
 - 4,500 square foot retail space
 - 2,100 square foot restaurant space with outdoor seating

15896-15898 LAGRANGE ROAD

Before:

- ❖ Two aging commercial buildings
- ❖ Non-conforming billboards
- ❖ Tenants:
 - Fat Sam's
 - Currency Exchange

After:

- ❖ 6,150 square foot multi-tenant building
 - Mattress Firm
 - 2,300SF available
- ❖ 8,000 square foot multi-tenant building
 - AT&T
 - Aspen Dental
- ❖ Non-conforming billboards removed



66 ORLAND SQUARE DRIVE (FORMER HOMEMAKER'S SITE)

Before:

- ❖ Originally approved and used as a 161,000 square foot Homemaker's Furniture Gallery/warehouse
- ❖ Original tenant vacated, Carson's Furniture Gallery re-occupies only 71,738 square feet
- ❖ Remaining 91,363 square feet remained vacant for approximately 13 years

After:

- ❖ Multi-million dollar renovation including interior, exterior and site improvements
- ❖ Tenants:
 - Carson's Furniture Gallery
 - Skyzone Indoor Trampoline Park
 - Charter Fitness
 - Gizmo's Fun Factory

14290 LAGRANGE ROAD

Before:

- ❖ Orland Video

After:

- ❖ University of Chicago Medicine Center for Advanced Care
- ❖ 120,000 square foot outpatient clinic
- ❖ University of Chicago's largest off-site facility
- ❖ Generates 130,000 visitors a year
- ❖ Employs over 100 full-time professional/medical jobs



#OPKIND

ORLAND PARK MAYOR DAN MCLAUGHLIN INITIATED A SOCIAL MEDIA CAMPAIGN TO PUBLICLY RECOGNIZE THOSE WHO PRACTICE ACTS OF KINDNESS.

"This was a fun way to recognize acts of kindness both big and small," McLaughlin said. "Using OPKind, everyone can see the many acts of kindness happening every day in Orland Park."

Orland Park Mayor Dan McLaughlin initiated a social media campaign to publicly recognize those who practice acts of kindness.

Using the hashtag #OPKind on Facebook, Twitter, Instagram and Pinterest, people were encouraged to seek ways to show kindness and to celebrate those who are kind.

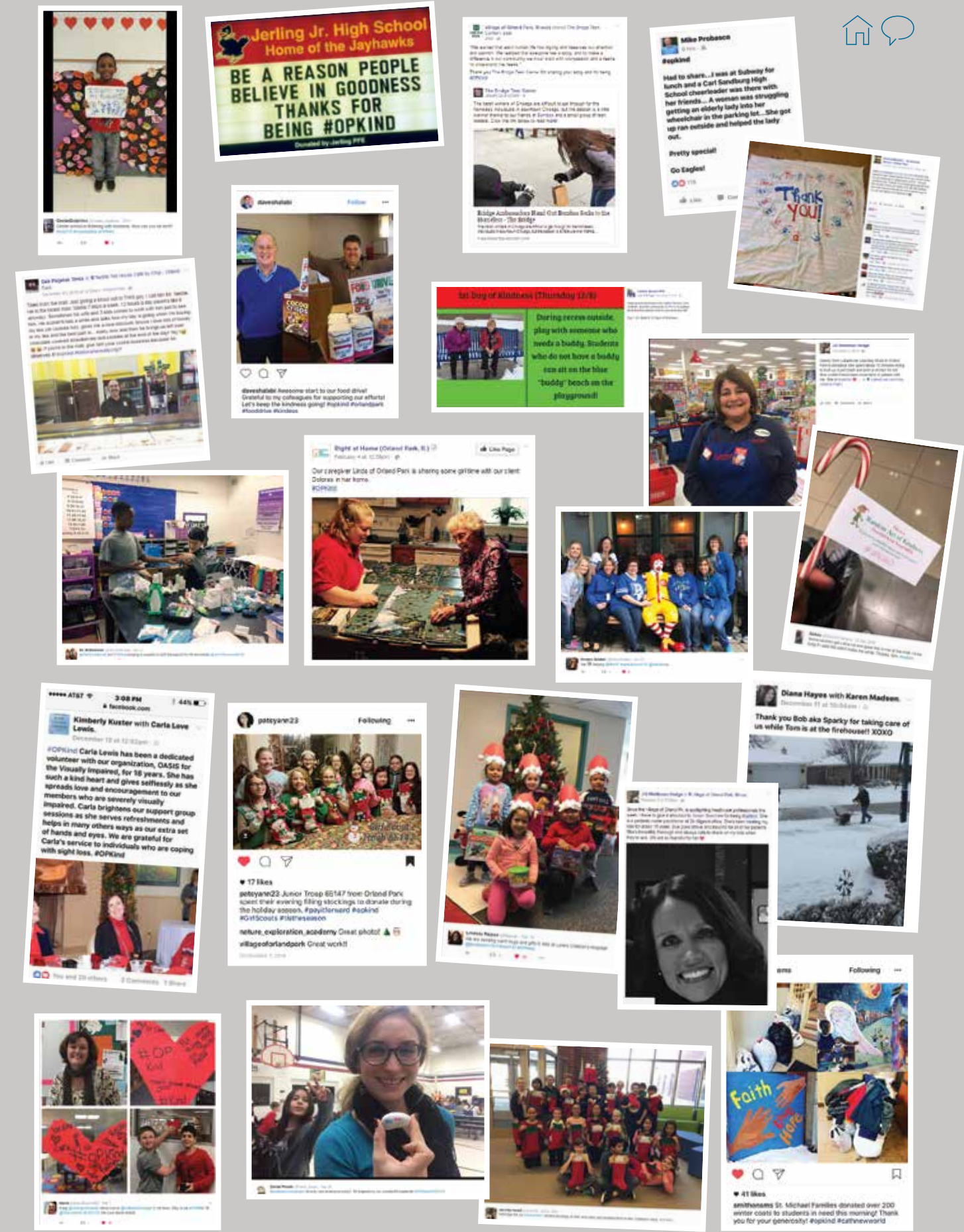
"Orland Park Is Kind" was the theme of the mayor's 2017 State of the Village Address held Thursday, March 9 at Carl Sandburg High School. Many of the tagged photos were shared at the mayor's address.

"When people saw someone doing something nice in Orland Park, we asked them to share these stories by using the hashtag #OPKind," McLaughlin said. "We know that many of our residents and businesses are active on social media and this was a way for us to join together to make a positive difference not only in Orland Park, but all over via social media."

"We were happy to hear from so many people through the community who participated in Orland Park's kindness campaign – businesses, churches, schools, community groups – everyone," McLaughlin said.

Social media users were encouraged to take pictures of acts of kindness or describe people being nice and share them on social media – Facebook, Twitter, Instagram and Pinterest – tagging #OPKind. Those who distributed the #OPKind stickers took pictures of the sticker recipients and briefly described the act of kindness with the hashtag OPKind.

"This was a fun way to recognize acts of kindness both big and small," McLaughlin said. "Using OPKind, everyone was able to see the many acts of kindness happening every day in Orland Park." ♦



MAYOR McLAUGHLIN'S SPRING SENIOR COFFEE

"I always look forward to meeting with seniors at this spring coffee.

After a long winter, it's great to connect face-to-face with residents," said Mayor Dan McLaughlin.

Thank you to those who were able to join us at Mayor McLaughlin's 2016 Senior Coffee events in August and October.

Orland Park senior residents are invited to attend Mayor Dan McLaughlin's Spring Senior Coffee on Thursday, March 16 from 9-11 a.m. at the Orland Park Civic Center, 14750 Ravinia Avenue.

This year's luncheon will feature presentations on gardening and on the village's newest fitness facility – the Orland Park Health & Fitness Center.

"I always look forward to meeting with seniors at this spring coffee. After a long winter, it's great to connect face-to-face with residents," said Mayor Dan McLaughlin. "We will be covering some informative topics that I hope will make for a wonderful afternoon for our seniors."

University of Illinois Horticulturist and Master Gardener Margaret Burns-Westmeyer will present on waking up your garden, and will answer any gardening questions or concerns.

Residents will also hear from David Brainerd, center director of Orland Park Health & Fitness Center. Brainerd will highlight the amenities now offered at Orland Park's newest fitness facility and raffle off several free passes.

"I hope all seniors come out and join us for an afternoon of coffee and good conversation," said McLaughlin.

Seating is limited and reservations will be taken on a first come basis. Residents may reserve their seat by calling (708) 403-6133 now until March 14.

For more information, contact the Village Clerk's Office at (708) 403-6150.



VETERANS

The Village of Orland Park's Memorial Day Ceremonies are poignant tributes to those who have died serving our country. Flags from each of the 50 states billow as they provide a colorful frame for the village's towering memorial, Ara Pace – Place of Peace. Bagpipes wail as lines of veterans file in for the presentation of colors and audience members silently rise to their feet.

"The village's ceremonies for Memorial Day and Veterans Day are long standing traditions that everyone enjoys," said Mayor Dan McLaughlin. "It's nice to come together as a community to remember those who served our country and to never forget those who made the ultimate sacrifice."

Orland Park's observance of Memorial Day 2017 will be held Monday, May 29 at 1 p.m. at the village's Veterans Memorial, 14700 South Ravinia Avenue. The public is invited.

"Memorial Day Weekend marks the start of summer in Orland Park. The village's Centennial Park Aquatic Center opens for the season that weekend and we come together as a community to observe Memorial Day," the mayor said.

The village's Veterans Commission reminds area residents that the last day to add a veteran's name to Orland Park's granite memorial is Monday, May 1. The \$250 cost to add a veteran's name covers engraving and maintenance. Veterans may be living or deceased and do not have to live in Orland Park.

"It's especially touching when a veteran stands as his name is announced as his friends and family smile and applaud," the mayor said.

Forms to add veterans' names are on the village's website at <http://bit.ly/2lfAlol>. They are also available at the information desk at the Frederick T. Owens Village Hall, 14700 South Ravinia Avenue.

Questions about adding a veteran's name to Orland Park's memorial may be directed to the village's Veterans Commission at (708) 403-6115. ♦



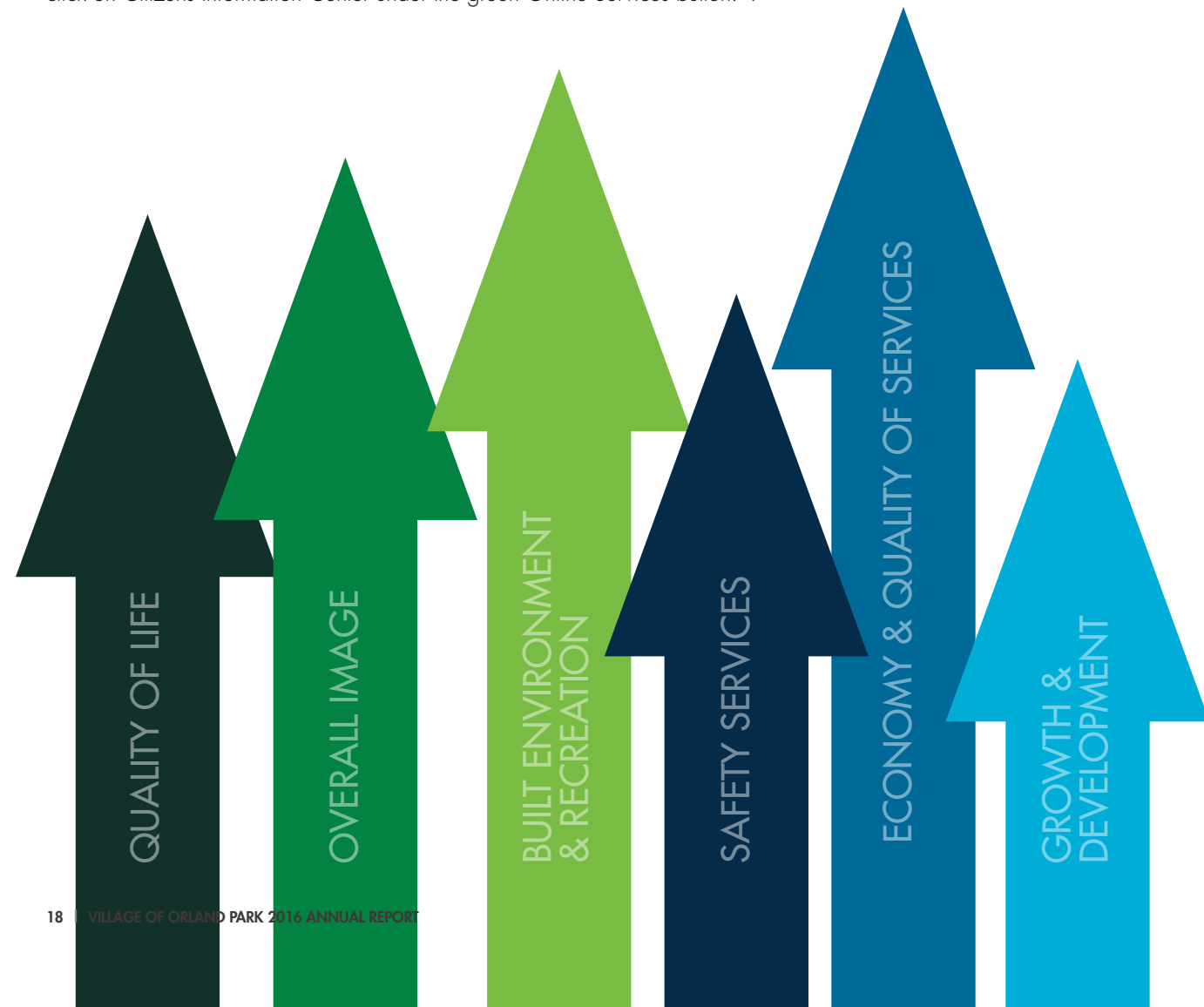
NATIONAL CITIZEN SURVEY 2016 RESULTS

The Village of Orland Park launched its third scientific National Citizens, Survey earlier this year with questionnaires sent to a random sample of households throughout the village. The questionnaire asked about the quality of life in Orland Park as it relates to safety, mobility, natural and built environment, economy, recreation and wellness.

Residents gave high marks for governance, with services provided, direction of the community, and confidence in village government among those attributes exceeding national benchmark comparisons. When rating governance and economy, both received positive ratings from a majority of respondents and were similar to or higher than the national benchmark comparisons.

In addition to a summary of ratings, residents indicated economy and safety as priorities/the most important focus areas for the community in the coming two years.

To learn more about the 2016 Community Wide Survey, visit orlandpark.org and click on Citizens Information Center under the green Online Services button. ♦



QUALITY OF LIFE

The village's overall quality of life was rated as excellent or good by **95** percent of the respondents. According to the survey report, "Overall quality of community life represents the natural ambience, services and amenities that make for an attractive community. How residents rate their overall quality of life is an indicator of the overall health of a community."



OVERALL IMAGE

Nearly **9 in 10** residents gave excellent or good ratings to the overall image of Orland Park and the village as a place to raise children. These ratings were higher than the national benchmark.

BUILT ENVIRONMENT & RECREATION

4 out of **5** gave favorable rating for overall built environment. Built environment, recreation and wellness ranked higher than the national benchmark. Almost all aspects of built environment were higher in Orland Park than in other communities across the nation.

3 out of **5** gave positive ratings for affordable quality housing in Orland Park.



SAFETY SERVICES

At least **9** out of **10** gave excellent or good ratings to police services, fire service, fire prevention and ambulance/EMS.

At least **8** in **10** residents gave positive ratings to emergency preparedness and crime prevention.

9 in **10** residents reported an overall feeling of safety both in their neighborhood and in commercial/downtown areas.



ECONOMY & QUALITY OF SERVICES

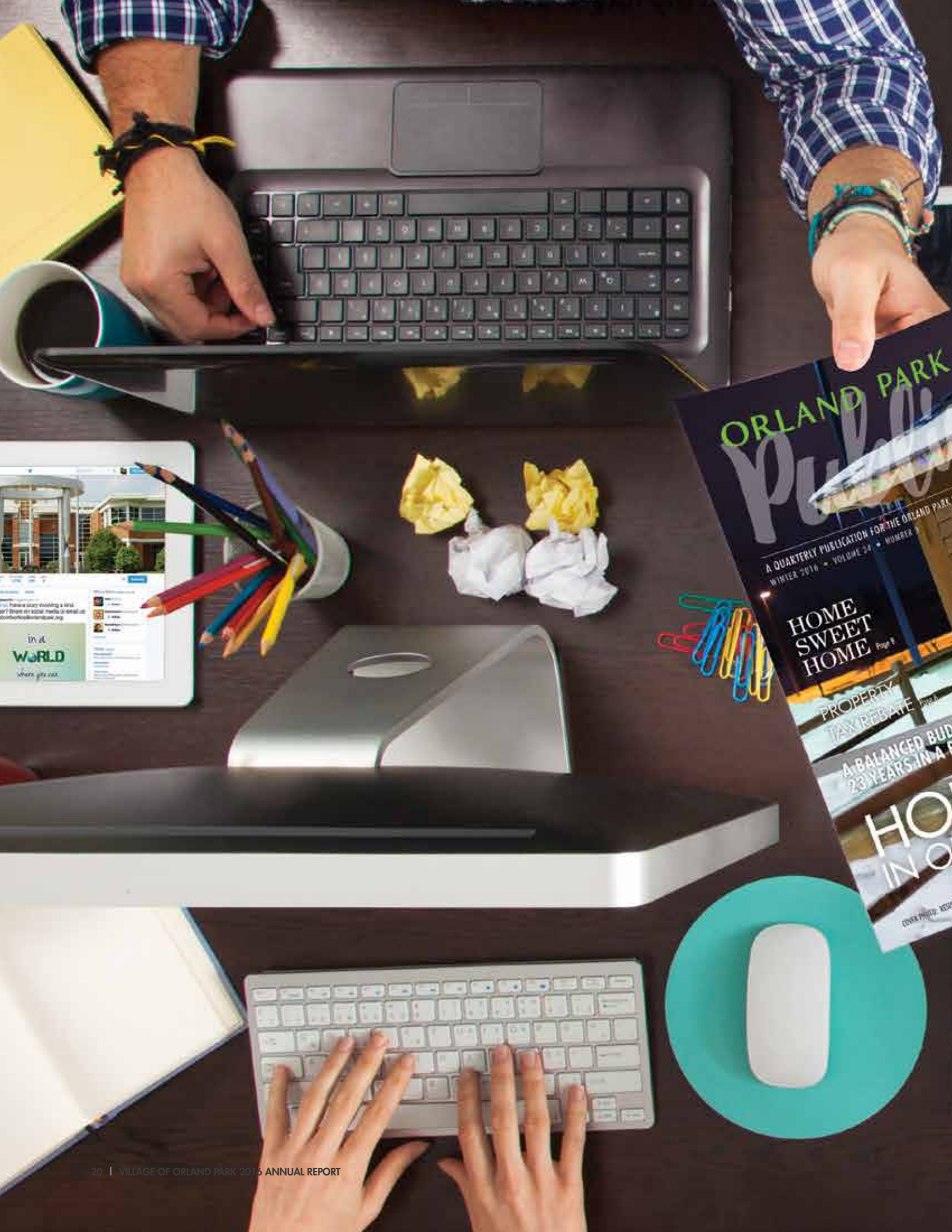
4 in **5** residents gave excellent or good ratings for overall economic health and development.

About **9** in **10** residents rated the overall quality of services provided by the village to be excellent or good.



GROWTH & DEVELOPMENT

4 out of **5** residents believe the village is doing an excellent job at being pro-active and responsible for the continued growth and development of the community.



WE'RE LISTENING

THERE ARE MANY WAYS THAT THE VILLAGE ENCOURAGES COMMUNICATION WITH RESIDENTS. STAY INFORMED, GET UPDATES AND BE THE FIRST TO KNOW ABOUT VILLAGE EVENTS AND MORE THROUGH THE FOLLOWING METHODS.

Telephone Town Hall | You're busy. We understand. Not everyone can make the board meetings at Village Hall. Telephone Town Hall Meetings have been a great way to ask questions, get updates and talk directly with the mayor, board members and department directors in real time. Thousands of Orland Park residents have participated in the forums by asking questions, posing discussion topics or by simply listening in to become better informed. Topics have ranged from public safety to village finances. The last telephone town hall forum was held on February 9. Those who missed it can listen to the audio online at www.orlandpark.org or on the village YouTube channel.

Village Website | With just a few clicks, visitors can access a wide range of information online. Looking for meeting dates and times? Want to know about events happening around town? Need a permit for construction or tree removal? Need updates on road construction? All of this information and more is readily available online at orlandpark.org.

Quarterly Publication | The Village of Orland Park publishes four quarterly newsletters a year. Three issues of the Orland Park Public and one Annual Report are mailed to all residents and made available online for viewing. The publications are intended to provide a snapshot of village happenings, report on important dates and programs, as well as highlight members of our community.

Twitter | Follow @VillageOrlandPk on for realtime updates on community happenings, village announcements and more.

Facebook | Visit the village's page at facebook.com/villageoforlandpark and "like" the page to stay up-to-date on community-wide events and communicate one-on-one with the Public Information Office regarding village-related topics.

Pinterest | Are you a "pinner" on Pinterest? We are too! Follow our boards at pinterest.com/vlgoforlandpark for a variety of interesting facts, events and public announcements pertaining to the Village of Orland Park.

Orland Park Television | Administered through the Village of Orland Park Public Information Office, Orland Park Television welcomes programming and announcements from taxing bodies/government agencies that serve the Village of Orland Park. Available to Comcast and AT&T U-Verse cable television subscribers in Orland Park, and parts of Palos Park, OPTV exists to offer viewers information about the many programs and services offered by the Village of Orland Park.

Instagram | Capturing fun and light-hearted sights around Orland Park, as well as keeping the community up-to-date on village happenings is what you will find on the Village of Orland Park Instagram feed. Follow us at @villageoforlandpark today!

YouTube | Check out the many videos on YouTube featuring local events, cable shows and more at youtube.com/VillageofOrlandPark. Be sure to subscribe for timely updates.

E-Newsletter | Go to orlandpark.org to sign up to have our monthly e-newsletter sent right to your email. Highlights for the upcoming month are featured along with reminders of important deadlines and upcoming events.

Mobile App | You can now download the newest app for your mobile devices, the Village of Orland Park mobile app. Find out about upcoming events, locate a park or facility, find a business, report a pothole and much, much more. Download today from the Apple Store or Google Play, compatible with Apple and Android devices.

Virtual Town Hall | The village uses a virtual town hall to touch on important topics affecting residents. This virtual town hall site is a part of the village website, in the form of an online forum. Periodically, the village presents topical questions, allowing for resident feedback and direct communication. Visit orlandpark.org and click the green Virtual Town Hall button of the left side of the main page for more information. ♦

THE VILLAGE'S NEWEST FITNESS FACILITY,
ORLAND PARK HEALTH AND FITNESS CENTER
(FORMERLY PALOS HEALTH AND FITNESS) IS LOCATED
AT 15430 WEST AVENUE IN ORLAND PARK.

STOP BY FOR A TOUR TO SEE ALL THAT
THE NEW FITNESS CENTER HAS TO OFFER!



ORLAND PARK HEALTH & FITNESS

The Orland Park Health and Fitness Center began the new year with a new name, officially becoming a village facility on January 4, 2017.

The 78,000 square foot facility that opened in 2001 was earmarked for demolition because of Palos Health Care's \$130 million dollar expansion project with Loyola Medical Center. The now Orland Park Health and Fitness Center was saved by the village when the mayor worked with hospital officials to adjust the hospital's expansion plans. "A lot of people use the center for its therapeutic water pool, the indoor swimming pool and fitness amenities and it worked out well for everyone —truly a win-win situation," McLaughlin said.

Adding an indoor pool to the village's fitness offerings saves the village millions of dollars.

The Orland Park Health and Fitness Center (OPHFC) is a medically integrated fitness center certified through the Medical Fitness Association (MFA). The MFA evaluates in detail the provision of comprehensive services, medically integrated programming, physician referral processes, educated staff, and a safe environment. OPHFC serves approximately 3,500 members.

OPHFC is a multi-purpose facility with state of the art equipment, multiple group exercise studios, an indoor 1/10 of a mile track, gymnasium, spa, a lap and warm water therapy pool. OPHFC programming consists of medically integrated programming, traditional fitness programming including yoga, Pilates, cycling, cardio fusion, Aquacize with Arthritis, step and sculpt, and more; in addition to fee based programming such as personal training, spa services, swim lessons, Next Steps program, Boot Camp, Prenatal Yoga, and more.

Learn more about Orland Park's newest fitness facility by visiting www.ophfc.com or call (708) 226-0555 to speak to a representative. ♦



2016 TASTE OF ORLAND PARK

20
restaurants
participated.

Zero Waste Initiative
succeeded in cutting
close to half the amount
of trash that was sent
to the landfill when
compared to 2015.

Attendance – Best
attended Taste event to
date more than 45,000
in attendance.

Last year's event
generated over 6 tons of
landfill trash while this
year's number dropped
to 3.24 tons.



2016 CONCERTS

2016 featured six highly anticipated concerts with two at Centennial Park West; City Lights Orchestra on July 3 and Sixteen Candles, Classical Blast, and Fletcher Rockwell on September 4 with an estimated attendance over 2,000 at each event. Concerts included refreshments by Cooper's Hawk, Brass Tap, Burger 21, Jay Vending, and Nothing Bundt Cakes.

The Breakfast Club performed at the July 4 Independence Celebration.

There were three Concerts in the Park held at Crescent Park in 2016 entertaining approximately 200-350 patrons at each concert. On Sunday, June 12 the Walk-Ins, a group of Orland Park natives, provided a great performance. On Sunday, July 17 Denny Diamond performed Neil Diamond music, and on Sunday August 21, the band 1976 provided a musical journey through the 1970s.

2017 CONCERTS

- ❖ City Lights Orchestra will perform Sunday, July 2; 5:00 p.m. to 7:00 p.m. at Centennial Park West.
- ❖ Run Forrest Run performs at the Independence Day Celebration, July 4 from 7:15 p.m. to 9:15 p.m. at Centennial Park.

TASTE OF ORLAND PARK:

- ❖ Sixteen Candles performs Friday, August 4 from 8:30 p.m. to 11:00 p.m.
- ❖ 7th Heaven performs Saturday, August 5 from 8:30 p.m. to 11:00 p.m.
- ❖ American English performs Sunday, August 6 from 7:00 p.m. to 9:00 p.m.

LaGrange Road total project cost:

IDOT - \$100 Million

Village of Orland Park's cost:

VOP - \$19 Million



STORM WATER AND ROAD REHABILITATION

✦ Total cost of road rehabilitation (village roads) in 2016 was \$4,909,588

✦ Paved road rehabilitation expenditures, per total paved lane miles: \$10,424

✦ Total storm water construction and engineering improvement costs: \$6,684,814

(Completion of Maycliff stage 1, Kristo Lane, Streamstown Ct., Orland Brook culvert, Fernway ditch and road phase 1)

INFRASTRUCTURE UPDATE

LAGRANGE ROAD WIDENING PROJECT

Roads

All LaGrange Road lanes are complete and open to traffic. The patience of the community during the Illinois Department of Transportation (IDOT) project process is much appreciated. Permanent traffic lights, landscaping and retaining wall work will be complete by summer 2017.

The result of the project is improved traffic flow, a safer roadway and a more aesthetically pleasing LaGrange Road.

159TH – WILL/COOK TO RAVINIA

Proposed Work

- Complete replacement and widening of the existing pavement from Interstate 355 to west of US Route 45 (LaGrange Road).
- Intersection improvements at Cedar Road, Parker Road, North & South Bell Road, Will-Cook Road, Wolf Road, 108th Avenue, and 104th Avenue.
- Complete replacement of existing highway signage and drainage system.
- Construction of two lanes 12' wide in each direction separated by a varying 18' to 28' wide raised curbed median.
- Construction of a separate 10' wide multi-use path and sidewalk is also included with the improvement.
- Traffic signal improvements at the intersections of Cedar Road, Parker Road, North & South Bell Road, Will-Cook Road, Wolf Road, 108th Avenue and 104th Avenue.
- Intersection lighting at the intersections of Cedar Road, Parker Road, North & South Bell Road, and from 113th Court to Wolf Road.
- Bridge replacement at Spring Creek and Marley Creek with reinforced concrete box culverts.
- Construction of eight (8) dry-land bridges.
- Aesthetic landscaping.

The completion date for the entire Cook County project is February 11, 2018.

THE CAMPUS ON I-80

Over the course of 2016, the Village Board reviewed the development potential of the area along Interstate 80. The result is the adoption of the Regional Mixed-Use Campus (RMC), which is intended to develop as a high-intensity, interrelated live/work/learn/play district.

The RMC District includes properties within the area loosely bordered by LaGrange Road on the east, Interstate 80 to the south, 107th Avenue to the west, and certain parcels on the north side of Orland Parkway.

DEVELOPMENT OBJECTIVES

Interconnected Site Planning

Buildings shall be (1) located at the street edge and clustered together with (2) shared parking facilities and (3) common amenity space, including (4) regional stormwater detention facilities.

Life Between Buildings

The defining quality and character of the district shall be the campus feel created through a network of (5) public plazas and open space areas. The spaces between buildings shall flow together and provide visual and physical connections for pedestrians.

Pedestrian Experience

Sidewalks and pathways are required to (6) connect the street frontage to all front building entrances, parking areas, plazas, and any other destination that generates pedestrian traffic.

Mix of Development Intensity

The vast majority of the district shall allow tall buildings, thereby encouraging more intense development (7) appropriate next to an interstate. Development of (8) low- and (9) medium-intensity structures will be encouraged to co-locate and share common areas.

Target Knowledge-Based Industries

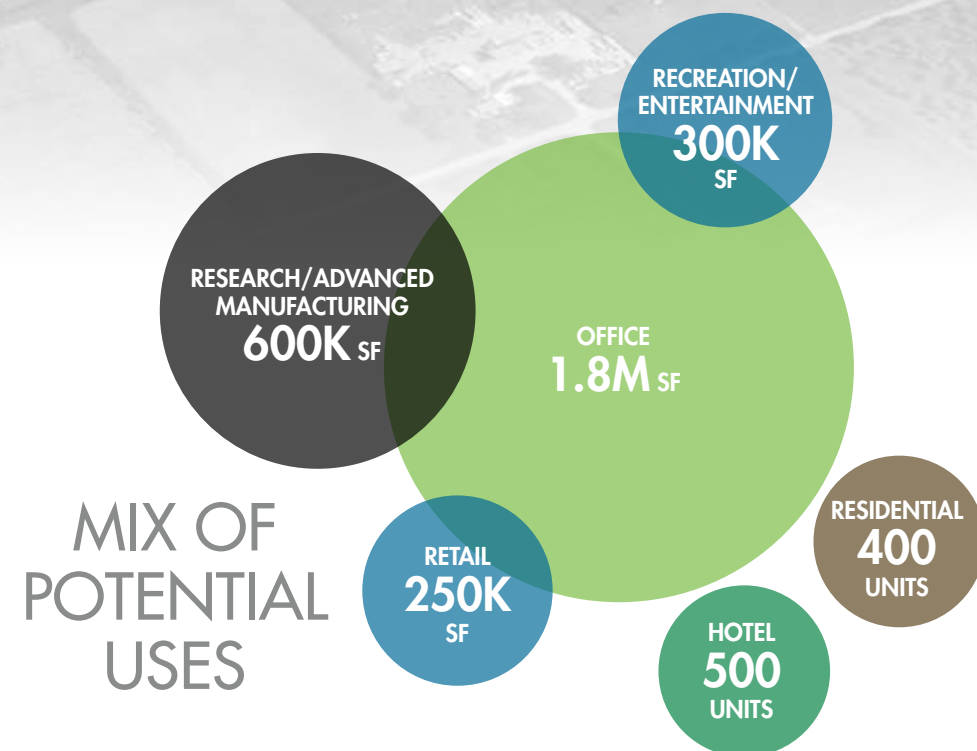
A broad spectrum of users are encouraged to congregate within the district - office, retail, multi-family, entertainment, and recreation - with a special emphasis on knowledge-intensive sectors, such as corporate offices, research labs, advanced manufacturing, and business incubator facilities.



EXAMPLE 1 A masterplan showing the possible arrangement of buildings, parking, and other land uses.



EXAMPLE 2 A conceptual pedestrian-scaled development highlighting the potential interplay between uses and buildings of varying scales.



FROM THE VILLAGE MANAGER'S OFFICE

OPERATIONAL EFFECTIVENESS

In 2013, the Village Board of Trustees approved a formal strategic plan for the Village of Orland Park. The three main goals, or pillars, identified in the strategic plan focus on (1) **economic development**, (2) **downtown development**, and (3) overall **quality of life** in the community.

As part of the strategic planning update, the Village Board emphasized utilizing technology as a platform for delivering our services and improving performance. As such, the board adopted "High Performing Organization" (HPO) as a fourth pillar in its strategic plan.

Based upon the goals set by the Board of Trustees, staff compiled specific objectives and initiatives that will accomplish these goals. These objectives and initiatives can be found in the Strategic Plans of the Village's operating departments.

 <p>ECONOMIC DEVELOPMENT</p> <p>Support the formation of an I-80 Development Initiative.</p> <p>Recruit targeted professional services, restaurants, and entertainment businesses to the Village of Orland Park.</p> <p>Develop a program for the revitalization of legacy retail centers in Orland Park.</p>	 <p>DOWNTOWN DEVELOPMENT</p> <p>Support a long-term plan for the development of the village's downtown area.</p> <p>Program Downtown Orland Park with community events.</p> <p>Downtown Orland Park blends the Old Orland Historic District with the village's present and future, offering a pedestrian friendly environment with both residential and commercial uses.</p>	 <p>QUALITY OF LIFE</p> <p>Provide resources and support for the continued delivery of best-in-class core services to Village of Orland Park residents and businesses.</p> <p>Provide for the maintenance and improvement of village parks, facilities and open spaces.</p> <p>Maintain and enhance intra-Orland Park transportation.</p> <p>Enhance two-way communication with the community.</p> <p>Support programs that focus on improving public safety.</p>	 <p>HIGH PERFORMING ORGANIZATION (HPO)</p> <p>Increased automation of village services</p> <p>Implement Lean Six Sigma Methodology</p> <p>Integrate technology across the entire organization</p> <p>Dedication to employee development</p> <p>Data-driven performance management</p> <p>Business process improvement</p>
--	---	---	---

STAR COMMUNITIES PROGRAM

In 2016, the Village of Orland Park began participating in the STAR Communities Program. STAR (Sustainability Tools for Assessing & Rating Communities) provides a framework to benchmark and measure the village's sustainability efforts. The program also helps the village to develop cohesive strategies and partnerships with different community organizations to advance development and quality of life. Some of the STAR objectives include: aging in the community, civic engagement, safe communities, green infrastructure, local economy, energy efficiency, good governance, etc.

- Through participation in STAR, the village will further efforts in promoting the quality of life by identifying strengths and gaps and increasing sustainable practices in all aspects of the village.
- Through the participation in STAR, the village wants to cultivate awareness in sustainability among village departments and community organizations. Also, the village would like to recognize those who have already been contributing to the prosperity of the village through sustainability.

ELECTRIC AGGREGATION

The community's overall electric utility generating capacity includes a portion from renewable energy sources. The electric utilities serving the community are generating 50 percent or more of their overall electricity from renewable energy sources.

The Village of Orland Park established an electric aggregation program in June 2012 to benefit residents and qualified small businesses. The Village-wide cumulative savings since the program's inception are now over \$8.2 million.

HPO

In 2015, as part of the strategic planning review, the Village Board emphasized utilizing technology as a platform for delivering our services and organizational improvement toward improving performance. As such, the board adopted "High Performing Organization" (HPO) as a fourth pillar in its strategic plan.

The key objectives related to HPO are: increased automation of village services (job applications, permits, etc.) and improvement of "internal/externafacing" functions as well as using technology and business process improvement as the platform for achieving this goal. It also entails embracing a culture of learning, respect, leadership at all levels, and continuous improvement. It marries board policy with management commitment in ensuring that the village can invest in the human knowledge, skills, and abilities as well as the technology tools to transform how we approach our work.

On May 4 - 6, 2016, 35 staff members attended three full days of high performance organization (HPO) training. Participants included a cross section of executive staff, supervisors, and front line employees.

LEAN SIX SIGMA

Lean Six Sigma's successful methodology will help Orland Park become a high performing organization. Lean Six Sigma gives the principles and tools necessary to undertake continuous improvement projects aimed at reducing and eliminating waste or unnecessary steps, reducing project variations, improving customer satisfaction, and improving the organization's performance.

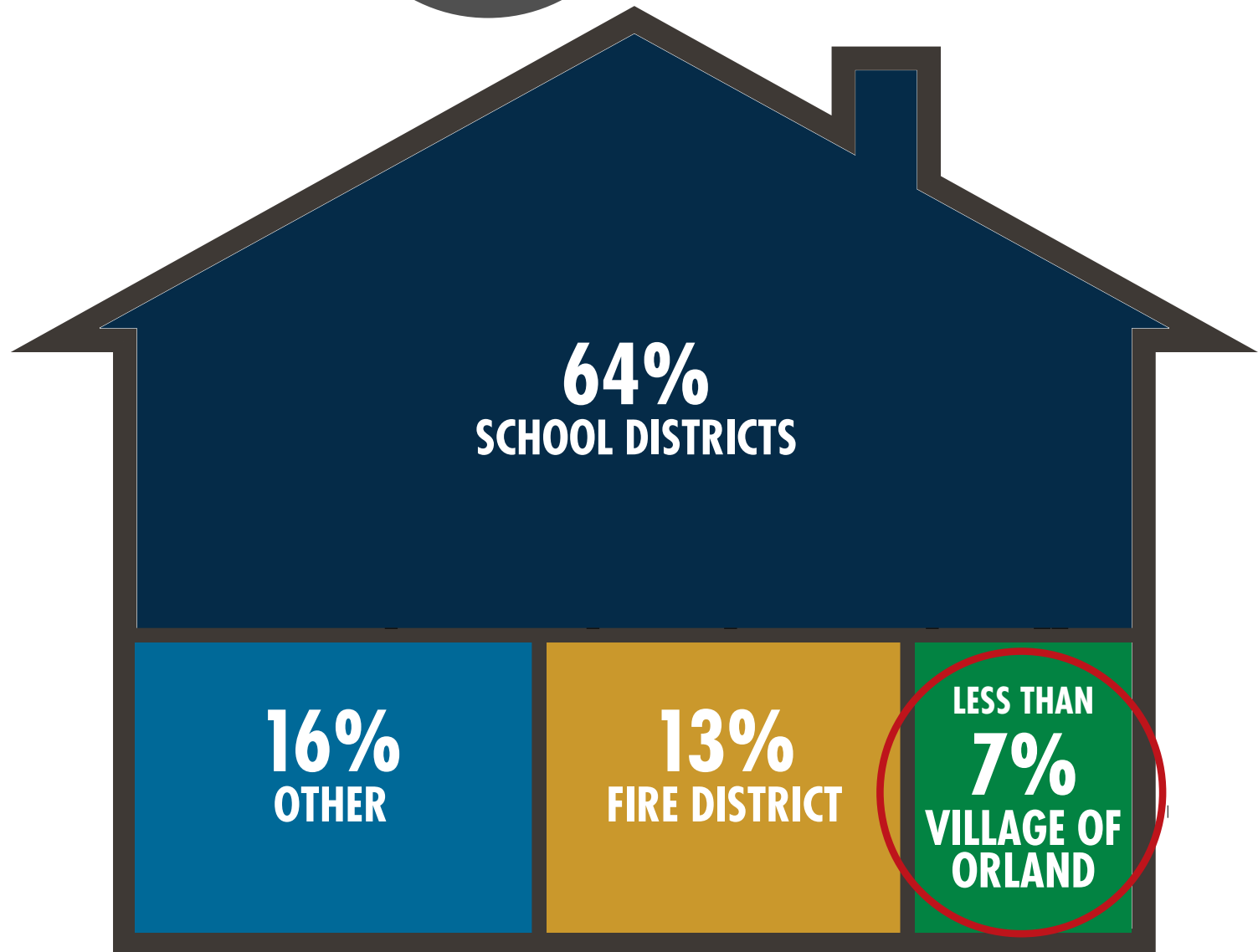
More than 23 executive staff members successfully participated in two training sessions held at Northern Illinois University in Naperville to introductory lean principles.

Eleven members of staff completed four days of classroom training for Lean Six Sigma "green belt" certification. In order to complete certification, trainees must complete a project utilizing Lean and Six Sigma Principles. Staff members were divided into pairs and will work on designated projects that the leadership team has identified as useful to the organization. Examples of the Six Sigma green belt projects that staff are currently working on include:

- Commercial Building Permit Process
- Salt Accountability
- Development Review Process
- Employee Leave Process
- Applicant Tracking Workflow Improvement

Less than 7 percent of your property tax bill goes to the Village of Orland Park.

The tax levy in Orland Park has remained flat for the last six years.



VILLAGE FINANCES

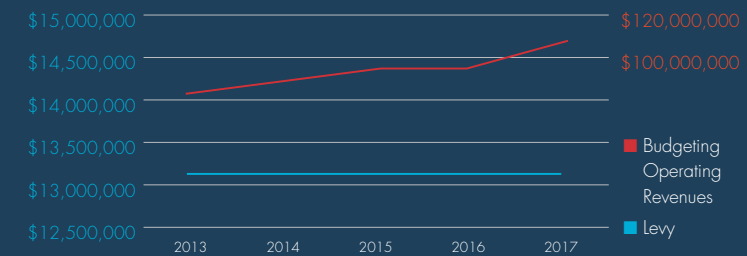
WHAT DOES IT ALL MEAN?

Property Tax

Property tax is a tax assessed on real estate. The tax is based on the value of the property (including the land) you own and is assessed by the county. **Less than 7 percent** of a resident's annual property tax bill goes to the village to partially fund public safety, recreation services and debt service payments and to fully fund the village's required employee pension fund contributions.

Tax Levy

A municipal tax levy is the total tax collected from all property owners in order to fund village services and amenities. **The tax levy in Orland Park has remained flat for six (6) straight years.**



Sales Tax

The village collects a 1 percent sales tax on most retail sales, as well as a .75 percent home rule sales tax on most non-titled retail sales.

Debt/GO Bonds

General Obligation bonds (or GO bonds) are debt instruments issued by local governments to raise funds for a variety of purposes. This type of bond is backed by the full faith and credit of the issuing municipality. Village policy is to issue debt to fund specific, one-time capital projects when current operating revenues and/or available fund balances are not sufficient to cover the cost of the project.

WHERE DOES IT ALL GO?

- In 2017, the village levied \$13,425,519 in property taxes. This revenue source will be used to fund \$4,850,900 in debt service payments due on a portion of the village's general obligation debt, \$6,888,714 in pension funding, \$721,847 for a portion of public safety, and \$964,058 for a portion of Recreation and Parks operations.
- The 2017 budget includes \$10,258,697 in Home Rule Sales Tax which will fund various capital projects and debt service payments.
- Sales Tax in the amount of \$21,008,236 will be used to fund general operations reflected in the General Fund including public safety and public works functions.
- Fees collected through the bi-monthly water bill fund operations of the water, sewer, and storm water utilities. These fees will also fund \$9,208,400 in utility capital projects during 2016.

STORM WATER MANAGEMENT

The Village of Orland Park Public Works Department continued its Storm Water Management Projects during 2016 with construction and engineering improvements to the village's storm sewers and culverts.

Storm water spending:

In all, 2016 storm water Construction and Engineering totaled \$6,684,814

- ❖ Construction
 - Fernway ditch grading
 - Kristo Lane storm water improvements
 - Maycliff storm water improvements (started in 2015)
 - Orland Brook culvert replacement
 - Binford storm water improvement
 - Streamstown storm water improvement
- ❖ Ongoing Engineering:
 - Fernway ditches
 - La Reina Réal storm water improvement
 - Maycliff stage 2 storm water improvement
 - Parkview stage 2 storm water improvement
 - 86th Avenue culvert replacement.

Looking forward..

Projects to continue into 2017 include:

2017 construction of storm water projects will be +/- \$9,000,000

- ❖ Wheeler Drive bridge replacement
- ❖ Parkview stage 2 storm water improvement
- ❖ Maycliff stage 2 storm water improvement
- ❖ Grasslands storm water improvement

ROAD IMPROVEMENT PROGRAM

A street maintenance program is approved annually by the mayor and Board of Trustees wherein various village-owned and accepted streets are scheduled for rehabilitation.

The purpose of the program is to reconstruct streets which have shown signs of deterioration over and above normal maintenance. Miscellaneous roadway patching was completed in areas throughout the village. The program includes replacement of hazardous sidewalks, repair or replacement of non-functioning curbs and gutters, milling of existing streets and new surface layers of asphalt.

Road Improvement Spending:

2016 Roadway Reconstruction and Maintenance totaled \$5,169,000

- ❖ Roadway reconstruction in neighborhoods
 - Maycliff Estates
 - Doyle Court along with a portion of 108th Avenue
 - Orland on the Green Unit 1 and Unit 2
 - Centennial Village
 - Ishnala Woods
 - Kristo Lane and Dorstep Lane
 - Fernway- 167th Place and Robinhood Lane south of 167th St.
 - 25,500 square yards of asphalt patching
 - 33,800 square yards of sidewalk replaced
 - 17.14 total lane miles of streets reconstructed or resurfaced
 - 4.2 miles of curbs replaced
 - 3,313 potholes filled

In 2016, work in the following areas and subdivisions were completed:

- Maycliff
- Doyle Court and 108th Avenue
- Orland on the Green
- Centennial Village
- Ishnala Woods

UTILITIES

- ❖ 36 water main break repairs
- ❖ 32 b-box repairs
- ❖ 62 storm inlet repairs
- ❖ 5 sanitary sewer repairs
- ❖ 80,000 linear feet of sanitary and sewer main jetting/cleaning
- ❖ 16 fire hydrant repairs

WATER

- ❖ **2015:** 5,450,000 gallons per day water pumpage
- ❖ **2016:** 5,876,000 gallons per day water pumpage
- ❖ 5,744 SmartPoint meter installations in 2016

TRANSPORTATION

Pace Bus Service

- ❖ 10,017 one-way trips in 2016
- ❖ 52,674 miles driven by two buses within the village

❖ Roadway maintenance included:

- Crack sealing
- Shotcrete curb repair
- Pavement marking
- Slab raising
- Pavement rejuvenator
- Asphalt patching

The 2017 budget for Road Improvement work is \$3,350,000

- ❖ Whispering Pines
- ❖ Ashburn Sound
- ❖ 160th Street
- ❖ Catalina Industrial
- ❖ Orland Terrace
- ❖ Fernway
- ❖ 138th Place
- ❖ Roadway maintenance similar to 2016

TREE PLANTING

The Board of Trustees condensed the ash tree removal program from a six (6) year program to a three (3) year program which allowed for all parkway ash trees to be removed by the end of 2015. Because of planting season limitations (spring and fall) all replacement tree installations were completed by the end of 2016.

- ❖ Nearly 6,000 replacement trees were planted, 3,210 in 2016 alone.

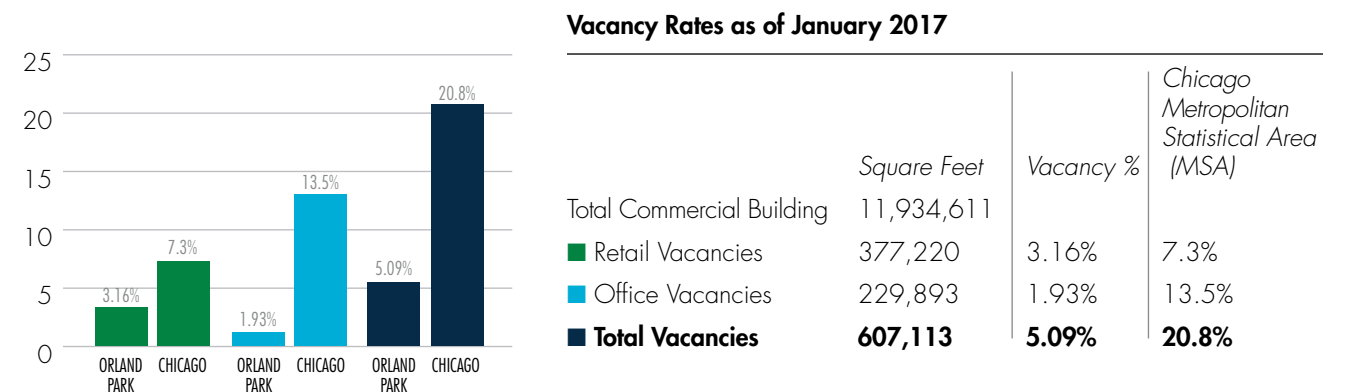


The Development Services Department oversees a myriad of new and ongoing projects within the village. Below you will find totals for some of the projects throughout the village in 2016.

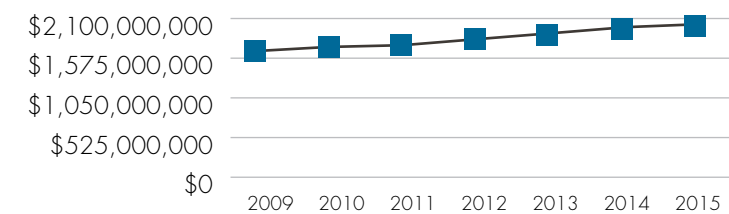
44	New single family home permits. New single family residential permits were up 33% from 2015 to 2016.
18	New townhome permits. Townhomes are a great, maintenance-free housing option for many families currently living in Orland Park as well as new potential residents. 18 permits were issued for the construction of new townhomes in the village in 2016.
2,471	Residential improvement and repair permits. Residents continue to make repairs, improvements and additions to existing homes in Orland Park with over 2,400 permits issued in 2016 for existing residential properties. Existing residential permits were up 4.6%.
6	New commercial buildings. Orland Park continues to remain a prime destination for businesses with six new commercial buildings built in 2016.
819	Commercial improvement and repair permits. Currently operating businesses in Orland Park continued to make improvements/repairs/additions to their facilities with over 800 permits issued in 2016. Existing commercial permits were up 89% in 2016 compared to 2015.
10,899	Permit inspections. Inspections are performed on all permit requests to ensure proper safety and building standards set forth by the village are being met.
1,155	Properties brought into code compliance. Maintaining code requirements within the village helps ensure the safety of all residents and guests. Please report any code enforcement concerns to the Development Services Department at (708)403-5300.
2,359	Business license & health inspections. In order to maintain safety and quality for residents and visitors, inspections on businesses are regularly performed.
362	Rental housing inspections. Inspections were completed for rental housing in Orland Park. Inspections are necessary for the protection of the life, health, welfare and property of rental residential owners and tenants, as well as that of the general public.
893	Rental housing registrations. All rental units must comply with all standards outlined in the Village of Orland Park Codes and Land Development Codes.
90	New businesses. 90 new businesses opened in Orland Park in 2016. This includes office, retail, etc and does not include temporary businesses or those with a change of ownership or location.

VILLAGE OF ORLAND PARK COMMERCIAL VACANCY RATES

The Village of Orland Park continues to be the destination of choice for businesses in Illinois. With over 11 million square feet of commercial building space, only 5.09 percent is presently vacant compared to the 20.8% vacancy rate of the Chicago Metropolitan Statistical Area (MSA). The **Chicago-Naperville, IL-IN-WI Combined Statistical Area** combines the **metropolitan areas** of **Chicago**, Michigan City (in Indiana), and Kankakee (in Illinois). This **area** represents the extent of the labor market pool for the entire region. The CSA has a population of 9,928,312 (2014 estimate).



Orland Park Total Retail Sales



- ❖ Retail sales continue to increase annually.
- ❖ Businesses are reinvesting in Orland Park. Commercial permits for improvements on existing businesses up 89% in 2016.



Orland Park is ranked:

- ❖ **3RD IN THE STATE*** in total sales for auto dealers and service stations
- ❖ **4TH IN THE STATE*** in total sales for furniture and electronics
- ❖ **5TH IN THE STATE*** in total sales for eating and drinking establishments
- ❖ **5TH IN THE STATE*** in total sales for apparel and accessories
- ❖ **5TH IN THE STATE*** in total retail sales

* (excluding Chicago)

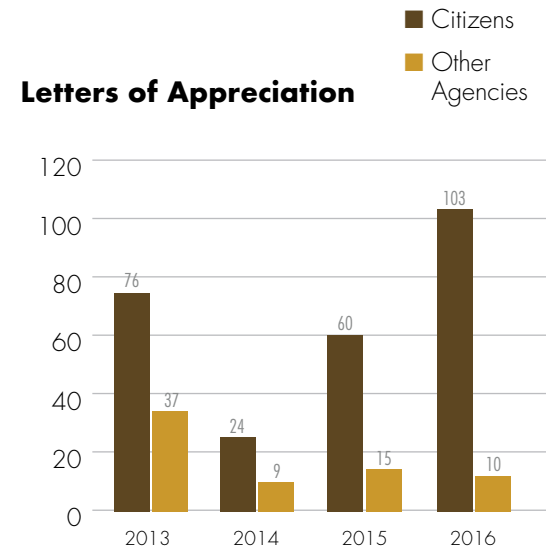
Source: Illinois Department of Revenue and Melaniphy & Associates, Inc., 2016

THE VILLAGE OF ORLAND PARK POLICE DEPARTMENT 2016 STATS AND NUMBERS

- ❖ Sworn Police FTEs per 1,000 population is 1.7 (101 FTE)
- ❖ Overall Crime Rate was 23 per 1,000 population
- ❖ UCR Part 1 Violent Crimes was .04 per 1,000 population
- ❖ UCR Part 1 Property Crimes was 22 per 1,000 population

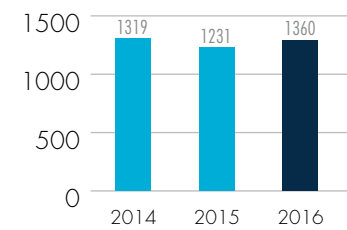
According to the National Citizen Survey, 90 percent of the citizens surveyed reported:

- ❖ An overall feeling of safety in Orland Park
- ❖ Felt safe in their neighborhood
- ❖ Safe in commercial/downtown area
- ❖ Opined that the police services received were either "excellent" or "good" (higher than the national benchmark)



Index Crimes

Index crimes consists of 10 crimes the FBI combines to produce its annual crime index. These offenses include homicide, forcible rape (criminal sexual assault), robbery, burglary, aggravated assault/battery, theft, motor vehicle theft, arson, human trafficking – commercial sex acts and human trafficking- involuntary servitude.



Violent Crimes

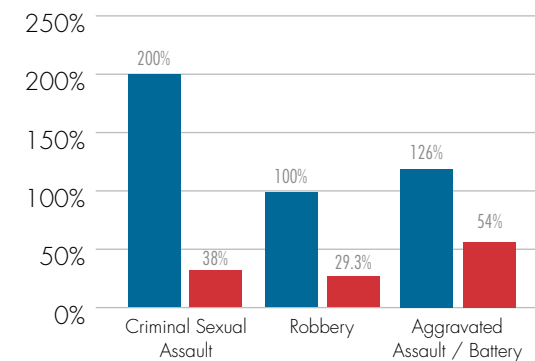
The Orland Park Police Department **arrested every offender** that committed a violent crime in Orland Park in 2016. Some percentages exceed 100 percent because offenders were apprehended in 2016 for crimes committed in previous year(s).

The Orland Park Police Department exceeded the national average clearance rate in all violent categories that were reported. The reported criminal sexual assault arrest involved a subject known to the victim.

Clearance rate is calculated by dividing the number of crimes that are "cleared" (a charge being laid) by the total number of crimes recorded.

■ Orland Park
■ National Average

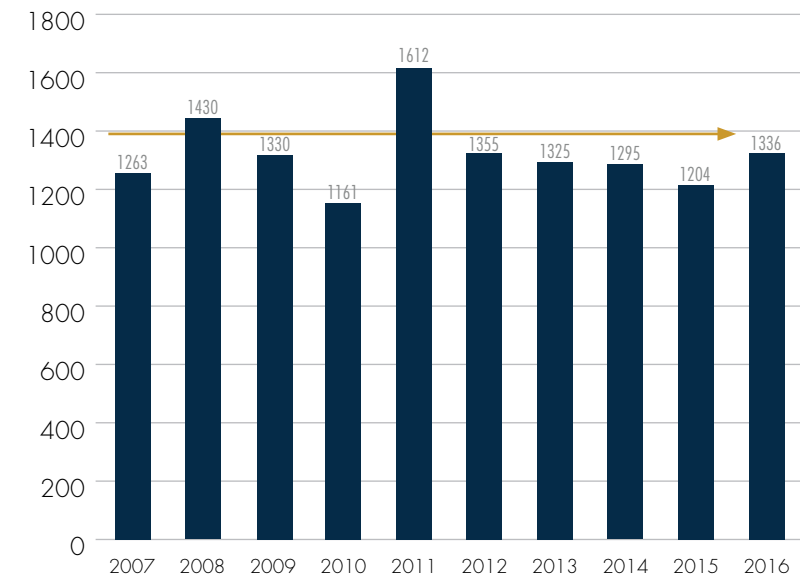
Percentages of Violent Crimes Cleared by Arrest or Exceptional Means



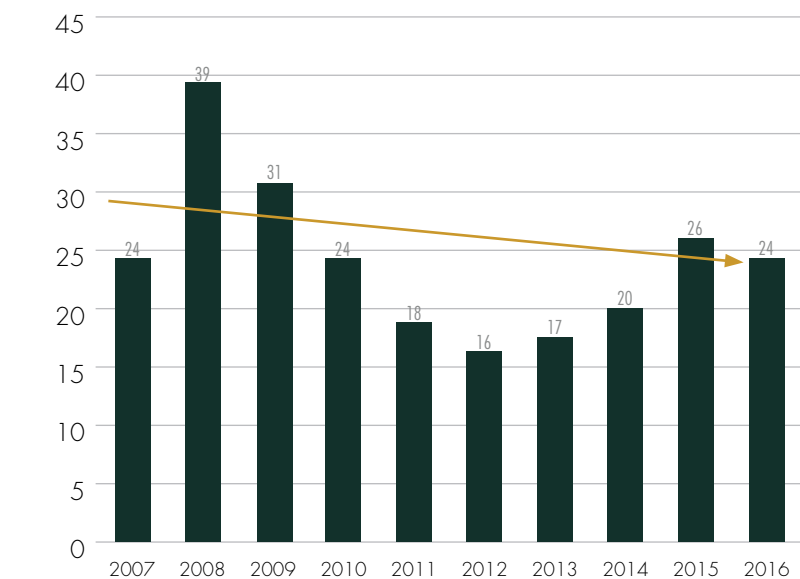
The Uniform Crime Report

The Uniform Crime Report (UCR) is comprised of two classifications of crime reporting. Part I crimes that include serious felonies and Part II crimes are categorized as non-serious felonies and misdemeanors. This methodology allows for uniformity in conducting regional or nationwide comparisons of statistical crime data.

10 Year Analysis of Property Crimes



10 Year Analysis of Violent Crimes



The August 5 - 7 2016 Taste of Orland Park showcased a selection of 20 of Orland Park's finest restaurants, the largest number to date, with an estimated attendance over 45,000 people throughout the weekend event. 10,000 event programs were distributed to participants. Entertainment included 7th Heaven, American English and One of These Nights along with Kids' Day, Car Show, Teen Battle of the Bands, OP's Got Talent, and the Veterans Concert. The event drew large crowds all three days and the weather was enjoyable. Staff received positive feedback on entertainment and restaurant selections from many attendees.

Five outdoor movies were shown in 2016; 'The SpongeBob Movie,' June 24, 'Kung Fu Panda 3,' July 3, and 'Minions,' August 12 were featured at the pool; 'Star Wars – The Force Awakens,' was featured at Crescent Park on July 15. 'Hotel for Dogs' - Dog Movie in the Park was held Saturday, September 10 at Centennial Park with approximately 60-70 participants; Carl Sandburg High School provided concessions for sale. The event was well received by all.

In 2016 our three annual runs continue to grow in popularity and size.

- ❖ 2016 Liberty Run/Walk: 216 runners, 144 walkers for a total of 360 participants; 322 participated in 2015.
- ❖ 2016 Pandemonium was a great success with a total of 381 participants; 325 participated in 2015.
- ❖ The 28th Annual Turkey Trot had 832 participants; 831 participated in 2015.

PATRON PARTICIPATION

- ❖ In 2016 over 101,000 patrons visited the water park, which is an 11% increase
- ❖ Over 1,700 memberships were purchased in 2016, which is a 12% increase over 2015.
- ❖ Recreation program enrollment reached over 17,400 patrons in 2016.

CPAC

In 2016, Centennial Park Aquatic Center was named Best of Chicago public pools by Chicago Magazine. The 2016 Centennial Park Aquatic Center lifeguards once again received three 5 star audits, demonstrating a mastery of life saving skills and techniques. Over 1,700 CPAC memberships were purchased in 2016.

THEATRE

The Orland Park Theatre Troupe opened the 2016 season with its spring production, "Murder's in the Heir." Over 300 people enjoyed two performances at the Orland Park Civic Center. The summer show was the Tony Award winning, "Shrek The Musical" with three performances held at the Carl Sandburg Performing Arts Center with 967 tickets sold. The final production of the year, "The Christmas Bus," was enjoyed by over 360 patrons during three performances.

In 2016, the Orland Park Theatre Troupe will present the musical, 'Beauty and the Beast.' Performances will be held on Friday, March 24 at 7 PM, Saturday, March 25 at 7 PM, and Sunday, March 26 at 2 PM at the Carl Sandburg Performing Arts Center.

ARTS COMMISSION CULTURAL SERIES

The Arts Commission presented three concerts and a poetry slam in 2016. The concerts were well received by patrons and included: Young Prodigy Concert, Cadenza Piano Quartet, and Jonathan Beyer & Elizabeth Reiter Concert.

SPORTSPLEX

- ❖ Open Gym revenue \$90,488
- ❖ Rock Wall revenue \$11,478
- ❖ Soccer rentals revenue \$81,861
- ❖ Party rentals revenue \$23,245
- ❖ 2,463 Memberships, which have increased 10% over 2015, with revenue of \$701,310

The Village of Orland Park provides and maintains 60 village parks, over 30 miles of trails, 139 athletic fields/courts, and approximately 300 acres of open space acquired through the Village Open Lands of Orland Park program. This equals over 600 acres of park space to meet the needs of residents and visitors of all ages and a variety of interests.

IN 2016, THE PARKS AND GROUNDS DEPARTMENT COMPLETED THE FOLLOWING TASKS:

- ❖ Newly constructed addition of Greystone Ridge Park
- ❖ Dogwood Park completely remodeled
- ❖ Performing over 650 annual playground safety inspections
- ❖ Installation of 2000 yards of playground safety surfacing in prevent injury from falls
- ❖ Installation of additional shade structures at Centennial Park Aquatic Center
- ❖ Phase one shoreline stabilization and restoration of Park Hill ponds 1 and 3
- ❖ Increased stewardships on village owned ponds to enhance native plantings and shoreline stabilization
- ❖ Balanced chemistry of over 750,000 gallons of water within the Centennial Park Aquatic Center
- ❖ Continued partnership with D230 to increase knowledge and improve Lake Sedgewick for future generations
- ❖ Illinois EPA survey of Lake Sedgewick
- ❖ Preventative and restorative maintenance allows for safe play of over 5,800 games/practices on village athletic fields

Looking forward:

2017 will bring the remodeling of one of the village's largest parks, Veterans Park.

The park is used by local residents, athletic groups, schools as well as one of the locations for the Recreation department's summer camps. The update will bring a fresh new look to a heavily used location.

CENTENNIAL PARK MASTER PLAN

Discussion is underway for a 5-year master plan to identify the appropriate uses and improvement to the village's 192 acre Centennial Park.



On December 5, 2016, the Village Board formally approved balanced operating and capital budgets for Fiscal Year 2017, once again without the implementation of any new revenue sources.

The Fiscal Year 2017 budget reflects approximately \$139.5 million in revenues and \$147.4 million in expenditures. The variance between total revenue and total expenditures, approximately \$7.9 million, consists of carryover budget savings, or operating surplus, from Fiscal Year 2016 and prior.

The village utilizes the “target based” budget method; therefore, the budget process begins with the calculation

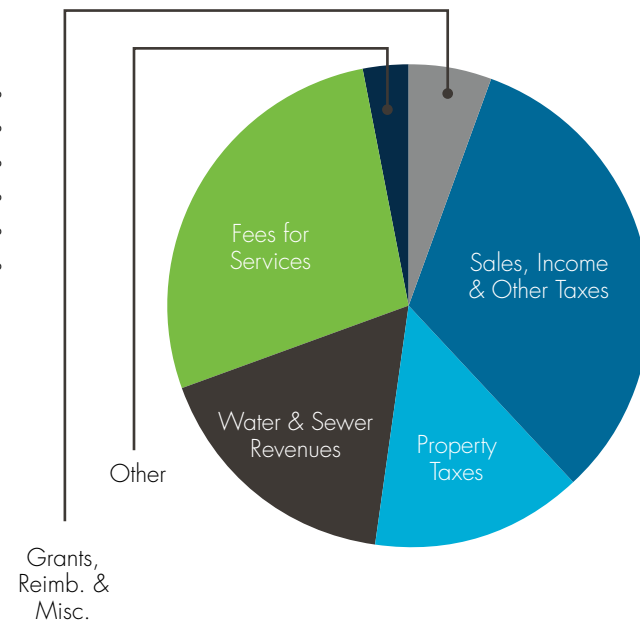
of available sources. Fixed costs are applied against these available sources and the net amount available is allocated to the village’s operating departments to fund variable operating costs. Available sources include fund balance remaining after setting aside Board authorized reserve amounts, as well as revenue projected for Fiscal Year 2017.

The village’s budget policy is to estimate revenues conservatively and to maintain a spending level less than or equal to current year resources. The issuance of short or long term debt will only occur if needed to fund long-term capital projects and will not be utilized to fund the village’s operating budget.

Revenues

■ Sales, Income & Other Taxes	\$41,550,228	29%
■ Property Taxes	18,143,887*	34%
■ Water & Sewer Revenues	21,971,600	18%
■ Fees for Services	29,603,176	29%
■ Grants, Reimb. & Misc.	4,063,937	3%
■ Other	7,854,457	6%

Other includes: Fines & Forfeitures, Investment Income and Financing Proceeds



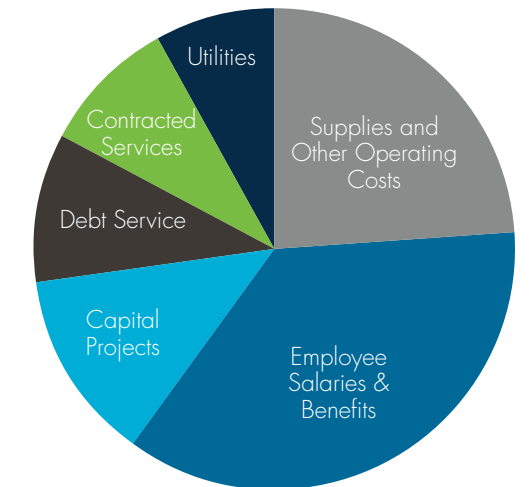
The village continues to maintain fund balances in the village’s operating funds that meet or exceed Board approved fund balance policy levels. During the 2016 budget process, the Village Board approved draw down of capital reserves to provide additional funding for road improvement projects. In keeping with policy, a portion of this draw down was recouped during the FY2017 budget process, while still providing for a robust capital plan for 2017.

The 2017 budget includes \$10,258,697 in Home Rule Sales Tax, part of which will fund capital projects. The budget also includes Sales Tax in the amount of \$21,008,236 that will be used to fund general operations of the General Fund, including public safety and public works operations.

Fees collected through the bi-monthly water bills funds operations of the water, sewer, and stormwater utilities. These fees will also fund \$9,208,400 in utility capital projects during 2017.

Expenditures

■ Employee Salaries & Benefits	\$47,337,188	36%
■ Capital Projects	16,985,604	13%
■ Debt Service	12,988,586	10%
■ Contracted Services	11,357,592	9%
■ Utilities	10,522,885	8%
■ Supplies & Other Operating Costs	31,897,101	24%



Includes 2016 property tax levy of \$13,425,519, road and bridge tax in the amount of \$401,674, TIF increment of \$1,158,000 and a transfer of property taxes to the Police Pension Fund of \$3,158,694 presented in accordance with the G.A.A.P.

SUMMARY STATEMENT OF NET ASSETS

(Reported in thousands)

The village's financial results for Fiscal Year 2015 (the most recently audited fiscal year) continue to reflect the Village Board's commitment to maintaining a strong financial position. The *Summary Statement of Net Assets*, reported in thousands, reflects a decrease in the village's total net assets of approximately \$24 million, a decrease of approximately 5.2 percent when compared to the prior fiscal year. The decrease in the village's net assets is attributable to a change in the authoritative guidance with

respect to the reporting of pension liabilities. In prior years, the village's total pension liabilities were reported in the Footnotes to the Financial Statements; the total pension liability is now reported on the Village's Statement of Net Assets. The negative change to the village's net assets is partially offset by a reduction in the principal balance of the village's long term general obligation debt.

	Governmental Funds		Enterprise Funds		Fiduciary Funds		Component Units		Totals	
	2015	2014	2015	2014	2015	2014	2015	2014	2015	2014
ASSETS										
Current & Other Assets	\$ 75,136	\$ 67,382	\$ 11,535	\$ 14,375	\$ 72,497	\$ 73,443	\$ 2,738	\$ 2,801	\$ 161,906	\$ 158,001
Capital Assets, Net	254,588	254,835	155,995	150,905	-	-	2,684	2,878	413,267	408,618
Long-Term Notes Receivable	38,239	38,866	-	-	-	-	-	-	38,239	38,866
Total Assets	367,963	361,083	167,530	165,280	72,497	73,443	5,422	5,679	613,412	605,485
DEFERRED OUTFLOWS OF RESOURCES										
Deferred Amount on Refunding Bond Issues	2,369	2,965	-	-	-	-	-	-	2,369	2,965
Deferred Amount on Pensions	14,605	-	492	-	-	-	29	-	15,126	-
Total Deferred Outflows of Resources	16,974	2,965	492	-	-	-	29	-	17,495	2,965
Long-Term Liabilities	148,530	108,082	9,502	6,889	-	-	55	12	158,087	114,983
Other Liabilities	20,081	20,575	3,488	2,802	-	-	135	72	23,727	23,449
Total Liabilities	168,611	128,657	12,990	9,691	23	-	190	84	181,814	138,432
DEFERRED INFLOWS OF RESOURCES										
Property Taxes Levied for Future Periods	13,426	13,425	-	-	-	-	-	-	13,426	13,425
Deferred Amount on Pensions	2,560	-	73	-	-	-	4	-	2,637	-
Total Deferred Inflows of Resources	15,986	13,425	73	-	-	-	4	-	16,063	13,425
NET POSITION										
Net Investment in Capital Assets	214,087	206,013	147,057	143,676	-	-	2,684	2,878	363,828	352,567
Restricted for:	-	-	-	-	-	-	-	-	-	-
Transportation	1,722	1,669	-	-	-	-	-	-	1,722	1,669
Employee Retirement	727	580	-	-	72,474	73,443	-	-	73,201	74,023
Capital Improvements	-	592	-	-	-	-	-	-	-	592
Public Safety	423	420	-	-	-	-	2,273	2,383	2,696	2,803
Unrestricted	(16,619)	12,692	7,902	11,913	-	-	300	334	(8,417)	24,939
Total Net Position	\$ 200,340	\$ 221,966	\$ 154,959	\$ 155,589	\$ 72,474	\$ 73,443	\$ 5,257	\$ 5,595	\$ 433,030	\$ 456,593

State law requires that the village's Comprehensive Annual Financial Report (CAFR) be issued no later than June 30 of the subsequent year. The Village of Orland Park's FY2016 audit is currently underway. Once that is complete, the FY2016 CAFR is compiled for the auditors' review. Once they are satisfied with the contents of the CAFR, they will issue their audit opinion. When the village receives the audit opinion, the CAFR will be posted on the village's website. This will occur no later than June 30, 2017.

SUMMARY STATEMENT OF ACTIVITIES

(Reported in thousands)

The *Summary Statement of Activities*, reported in thousands, provides a snapshot of the revenue sources the village utilizes to fund various operating and capital expenditures. As shown, total revenues increased by approximately \$3.9 (3.8%) million, while total expenses increased by approximately \$6.5 million (7.1%). While various revenue sources continued to grow in 2015, a portion

of this growth was offset by a decline in the market value of pension assets. The majority of the increase in expenditures was related to increased personnel costs, as well as the increased costs of providing municipal services.

	Governmental Funds		Enterprise Funds		Fiduciary Funds		Component Units		Totals	
	2015	2014	2015	2014	2015	2014	2015	2014	2015	2014
PROGRAM REVENUES (BY TYPE)										
Charges for Services	\$ 13,625	\$ 11,682	\$ 23,684	\$ 21,788	\$ -	\$ -	\$ 194	\$ 154	\$ 37,502	\$ 33,624
Operating Grants/Contributions	4,727	2,341	-	-	-	-	135	182	4,862	2,523
Capital Grants/Contributions	541	558	2,345	773	-	-	-	-	2,886	1,331
GENERAL REVENUES (BY TYPE)										
Property Tax	14,281	14,033	-	-	-	-	-	-	14,281	14,033
Sales Tax	30,791	30,109	-	-	-	-	-	-	30,791	30,109
Other Taxes	7,431	6,610	-	-	-	-	783	798	8,214	7,408
Contributions - Employer	-	-	-	-	2,412	2,231	-	-	2,412	2,231
Contributions - Plan Members	-	-	-	-	1,037	1,051	-	-	1,037	1,051
Investment Income	2,400	1,518	39	15	(1,318)	3,912	-	-	1,121	5,445
Miscellaneous	2,319	3,469	3	226	-	-	-	-	2,322	3,695
Total Revenues	76,115	70,320	26,071	22,802	2,131	7,194	1,111	1,134	105,428	101,450
EXPENSES (BY FUNCTION)										
General Government	12,939	10,960	-	-	-	-	-	-	12,939	10,960
Public Safety	22,166	18,723	-	-	-	-	-	-	22,166	18,723
Planning & Development	3,117	2,793	-	-	-	-	-	-	3,117	2,793
Public Works	14,244	16,617	-	-	-	-	-	-	14,244	16,617
Culture & Recreation	11,262	10,818	-	-	-	-	-	-	11,262	10,818
Interest	2,913	2,761	-	-	-	-	-	-	2,913	2,761
Payment to Developer for Project Costs	-	-	-	-	-	-	-	-	-	-
Water & Sewage	-	-	26,225	24,071	-	-	-	-	26,225	24,071
Parking	-	-	397	331	-	-	-	-	397	331
Internal Service Operations	-	-	-	-	-	-	-	-	-	-
Pension Benefits	-	-	-	-	3,100	2,769	-	-	3,100	2,769
Component Units	-	-	-	-	-	-	1,429	1,482	1,429	1,482
Total Expenses	\$ 66,641	\$ 62,672	\$ 26,622	\$ 24,402	3,100	2,769	1,429	1,482	97,792	91,325
EXCESS/(DEFICIENCY) BEFORE TRANSFERS	9,474	7,648	(551)	(1,600)	(969)	4,425	(318)	(348)	7,636	10,125
Transfers In/(Out)	(366)	(361)	366	361	-	-	-	-	-	-
Change in Net Assets	9,108	7,287	(185)	(1,239)	(969)	4,425	(318)	(348)	7,636	10,125
Net Assets - Beginning*	191,232	214,679	155,144	156,828	73,443	69,018	5,574	5,943	425,393	432,737
Net Assets - Ending	\$ 200,340	\$ 221,966	\$ 154,959	\$ 155,589	\$ 72,474	\$ 73,443	\$ 5,257	\$ 5,595	\$ 433,030	\$ 456,593

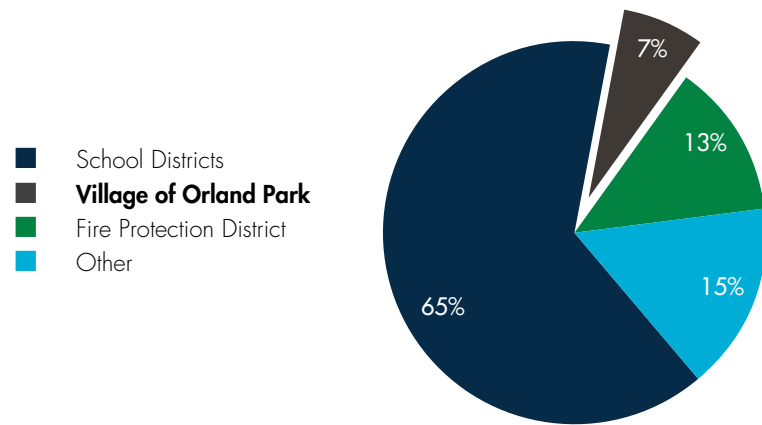
*2015 Net Assets - Beginning restated based on revised reporting standards

State law requires that the village's Comprehensive Annual Financial Report (CAFR) be issued no later than June 30 of the subsequent year. The Village of Orland Park's FY2016 audit is currently underway. Once that is complete, the FY2016 CAFR is compiled for the auditors' review. Once they are satisfied with the contents of the CAFR, they will issue their audit opinion. When the village receives the audit opinion, the CAFR will be posted on the village's website. This will occur no later than June 30, 2017.

Property Taxes reflected on the Statement of Activities includes 2014 property tax levy collections of \$13,423,519, property tax collection accruals of \$212,591, TIF increment of \$278,840 and road & bridge property tax collections of \$366,073. These amounts are presented in accordance with GAAP.

PROPERTY TAXES

Property taxes are levied on an annual basis to fund various costs incurred by the village, including public safety (partial funding), employee pensions (IMRF, FICA, Police Pension), recreation services and amenities (partial funding) and debt service (partial funding). Less than 7 percent of a resident's annual property tax bill goes to the Village to fund these costs.

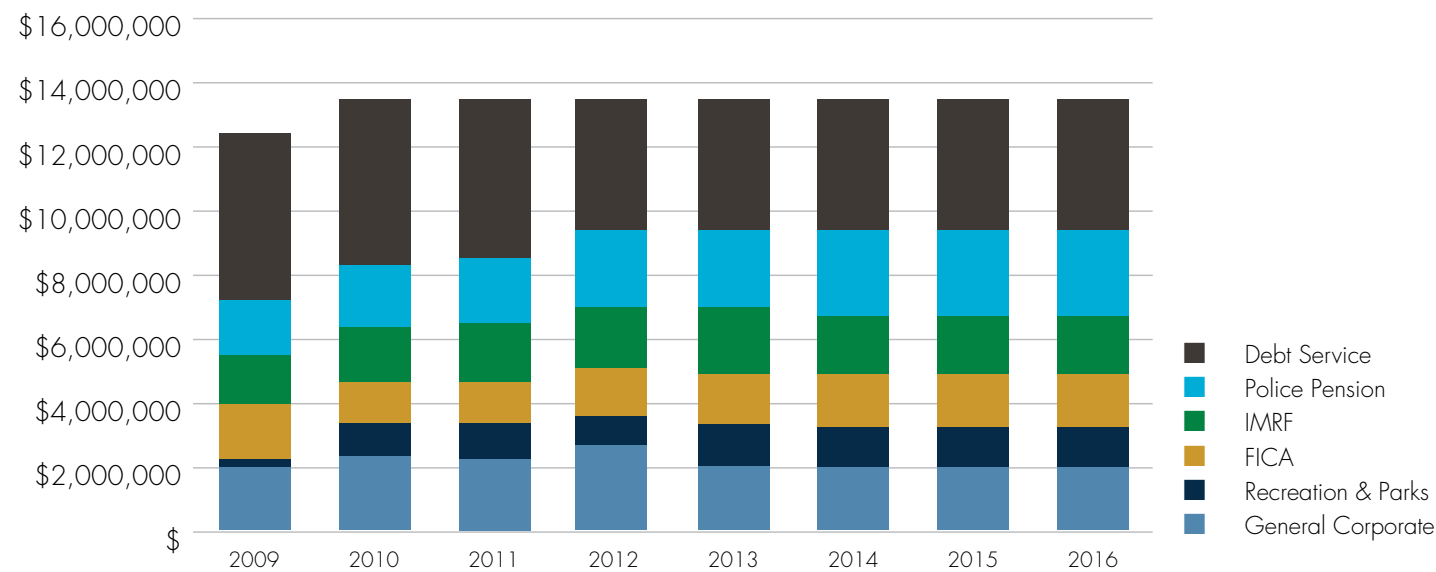


TAX LEVY

The village's property tax levy has remained flat for six (6) straight years. This means that, in total, Orland Park taxpayers will pay the same amount to the village in 2017 as they did in 2012. The amount levied by the village is just one part of the equation that determines the actual amount an individual homeowner will pay to the village. The homeowner's assessed valuation, as well as the village's overall assessed valuation (both determined by the assessor) and the state equalization factor (determined by the Illinois Department of Revenue) also determine the amount an individual homeowner will pay to the village.

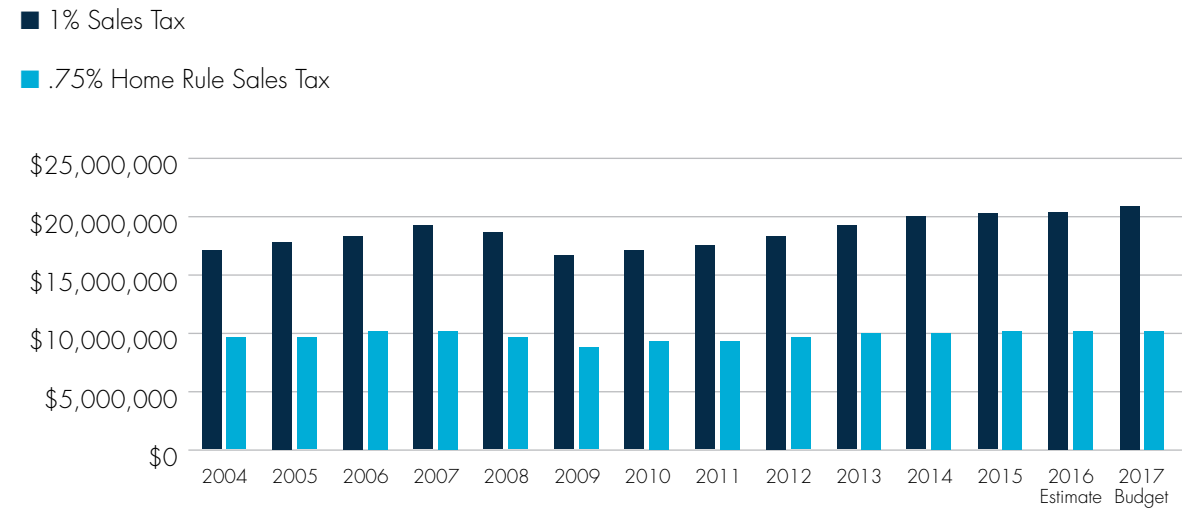
The 2016 levy reflects debt service levy abatements in the total amount of \$4,004,356. As opposed to levying property taxes for the payment of principal and interest on a portion of its outstanding debt, the village utilizes other revenue sources to make these debt service payments.

Utilizing a portion of its Home Rule Sales Tax revenues, over 12 of the last 15 years, the village has rebated property taxes in the total amount of approximately \$38.9 million.



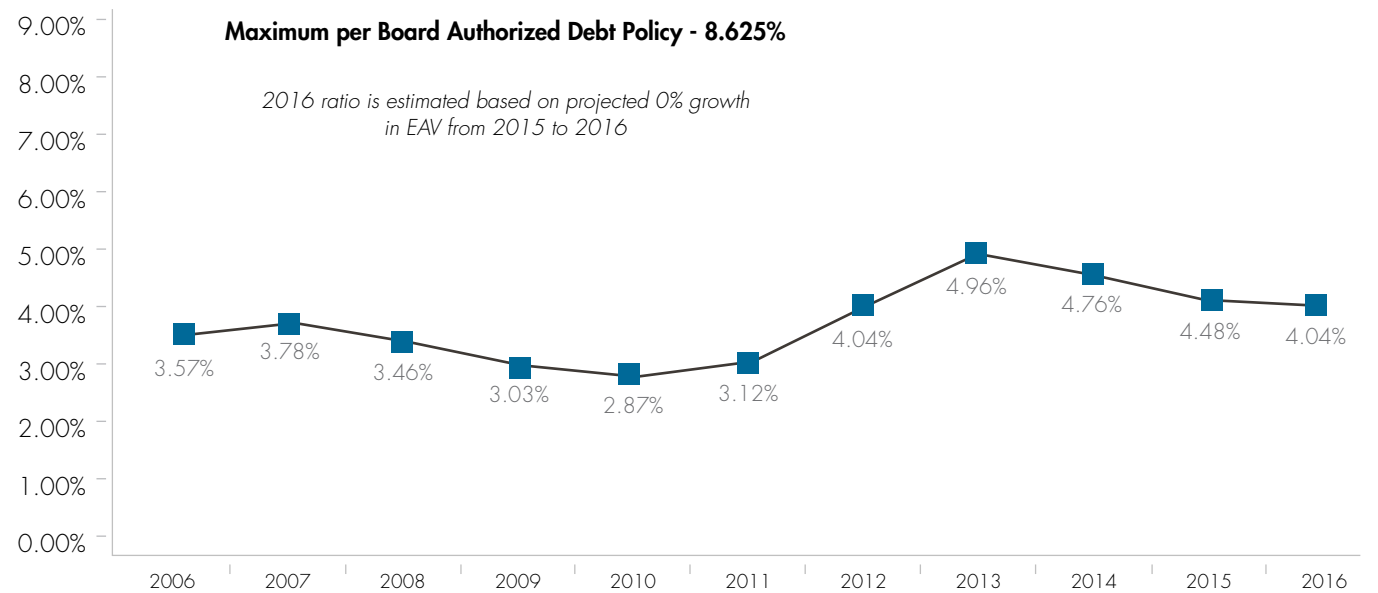
SALES TAX

Sales tax (1%) and home rule sales tax (.75%) collections continue to grow and have exceeded pre-recession levels for the last four years. Sales tax is utilized to fund general operations of the village; home rule sales tax funds capital, debt service payments and, when approved, the village's property tax rebate program.



DEBT

Orland Park's outstanding General Obligation (GO) bonded debt as of December 31, 2016 amounted to \$78,910,000, equating to a GO to EAV ratio of 4.04 percent. This ratio is comparable to a homeowner having a mortgage balance of approximately \$16,160 on a home with a market value of \$300,000. In 2016, approximately 10.7 percent of the village's operating revenues were used make debt services payments on the its outstanding debt. Standard & Poor's benchmark of 10 percent represents a moderate carrying charge.



ECRWSS - POSTAL PATRON
Orland Park, IL 60462 and 60467

CALENDAR OF EVENTS

MAYOR DAN McLAUGHLIN'S SENIOR COFFEE

THURSDAY, MARCH 16, 2017
9:00 - 11:00 AM
ORLAND PARK CIVIC CENTER

STUDENT GOVERNMENT DAY

MONDAY, MARCH 20, 2017
4:00 - 8:00 PM
VILLAGE HALL

'BEAUTY AND THE BEAST'

FRIDAY, MARCH 24, 2017 AND
SATURDAY, MARCH 25, 2017
at 7:00 PM
SUNDAY, MARCH 26, 2017
at 2:00 PM
CARL SANDBURG PERFORMING
ARTS CENTER

SPECIAL RECREATION GARAGE SALE

SATURDAY, MARCH 25, 2017
9:00 AM - 1:00 PM
ORLAND PARK CIVIC CENTER

'NO LIMIT LAUGHS'

FRIDAY, MARCH 31, 2017
FRIDAY, APRIL 28, 2017
FRIDAY, MAY 19, 2017
8:00 PM - 10:00 PM
CULTURAL CENTER
AGE: 18 & Up

EASTER EGG HUNT

SATURDAY, APRIL 8, 2017
10:00 AM
CENTENNIAL PARK
AGES 1 TO 9

DOGGIE EASTER EGG HUNT

SATURDAY, APRIL 8, 2017
12:00 PM
DOGOUT DOG PARK

SPORTSPLEX FAMILY HEALTH FAIR

SATURDAY, APRIL 22, 2017
9:00 AM - 12:00 PM
SPORTSPLEX

CENTENNIAL PARK AQUATIC CENTER OPENING DAY CELEBRATING 25TH ANNIVERSARY

SATURDAY, MAY 27
NOON - 8:00 PM
CENTENNIAL PARK

2017 CONCERTS

City Lights Orchestra Concert will
be Sunday, July 2; 5:00 p.m. to
7:00 p.m. at Centennial Park West.

Run Forrest Run will perform at the
Independence Day Celebration,
July 4 from 7:15 p.m. to 9:15 p.m.
at Centennial Park.

TASTE OF ORLAND PARK

Sixteen Candles will perform Friday,
August 4 from 8:30 p.m. to 11:00 p.m.

7th Heaven will perform Saturday,
August 5 from 8:30 p.m. to 11:00 p.m.

American English will perform Sunday,
August 6 from 7:00 p.m. to 9:00 p.m.

Mayor McLaughlin's

SENIOR COFFEE



ORLAND PARK CIVIC CENTER
THURSDAY, MARCH 16, 2017
9 - 11 AM

2017 IRISH MUSIC TROLLEY MARCH 11, 2017 • 4PM-9PM

Participating Restaurants

*Brass Tap • Mackeys' Pub • Fattie's Pub
Paddy B's • Irish Patriot • Square Celt*

CULTURAL CENTER, 14760 PARK LANE

ORLAND CHATEAU,
14500 S. LAGRANGE ROAD

CARL SANDBURG PERFORMING ARTS CENTER,
13100 S. LAGRANGE ROAD

ORLAND PARK CIVIC CENTER,
14750 S. RAVINIA AVENUE

SPORTSPLEX, 11351 W. 159TH STREET

CENTENNIAL PARK, 15600 WEST AVENUE