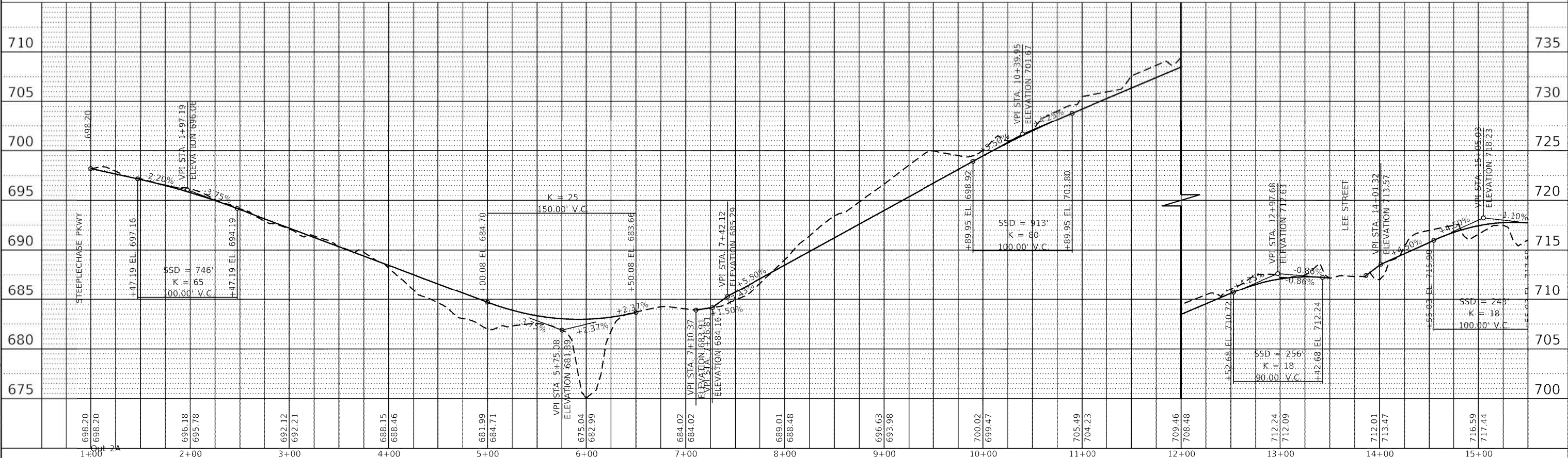
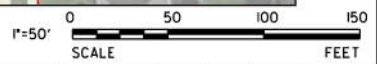


|   |  |  |
|---|--|--|
| PROP. CURVE PRPATHB_11<br>PI STA. = 9+40.28<br>$\Delta = 13^\circ 59' 06"$ (LT)<br>$D = 57^\circ 17' 45"$<br>$R = 100.00'$<br>$T = 12.27'$<br>$L = 24.41'$<br>$E = 0.75'$<br>P.C. STA. = 9+28.01<br>P.T. STA. = 9+52.42 | PROP. CURVE PRPATHB_14<br>PI STA. = 9+99.39<br>$\Delta = 13^\circ 42' 49"$ (RT)<br>$D = 53^\circ 03' 06"$<br>$R = 108.00'$<br>$T = 12.99'$<br>$L = 25.85'$<br>$E = 0.78'$<br>P.C. STA. = 9+86.40<br>P.T. STA. = 10+12.25 | PROP. CURVE PRPATHB_23<br>PI STA. = 14+73.77<br>$\Delta = 8^\circ 19' 21"$ (LT)<br>$D = 57^\circ 17' 45"$<br>$R = 100.00'$<br>$T = 7.28'$<br>$L = 14.53'$<br>$E = 0.26'$<br>P.C. STA. = 14+66.50<br>P.T. STA. = 14+81.02 |
|---|--|--|



MODEL: Definit  
 FILE NAME: N:\3019\19077\Drawings\Main\CADD\_Sheets\19077-ctn-plnpr01.dgn

**V3**  
 V3 Companies  
 7325 Janes Avenue  
 Woodridge, IL 60517  
 630.724.9200 phone  
 630.724.9202 fax  
 www.v3co.com

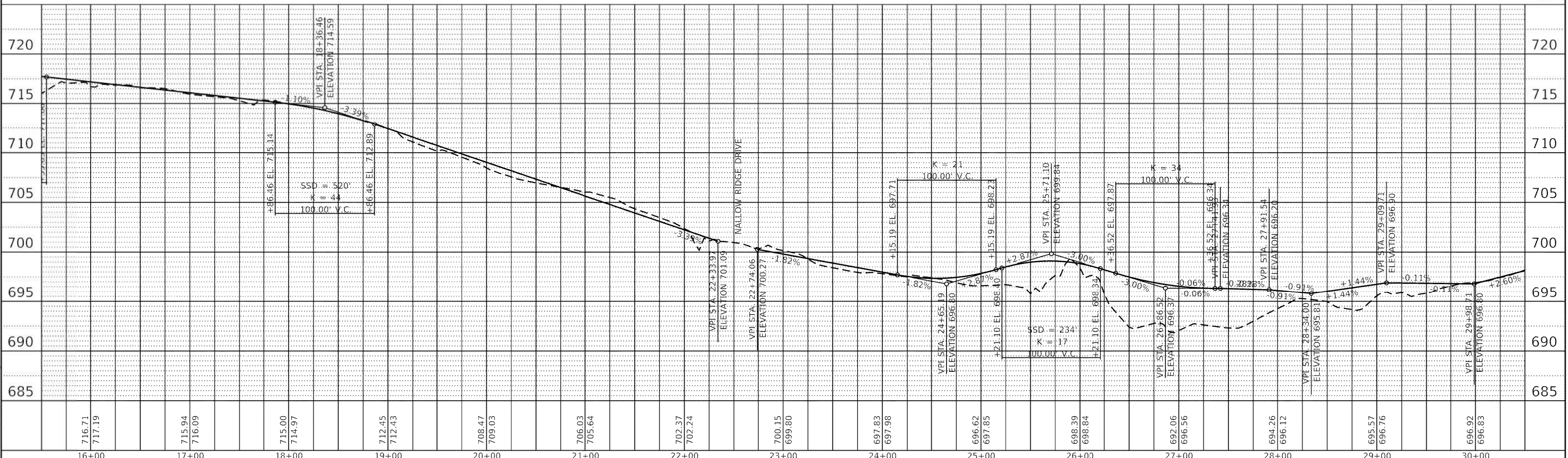
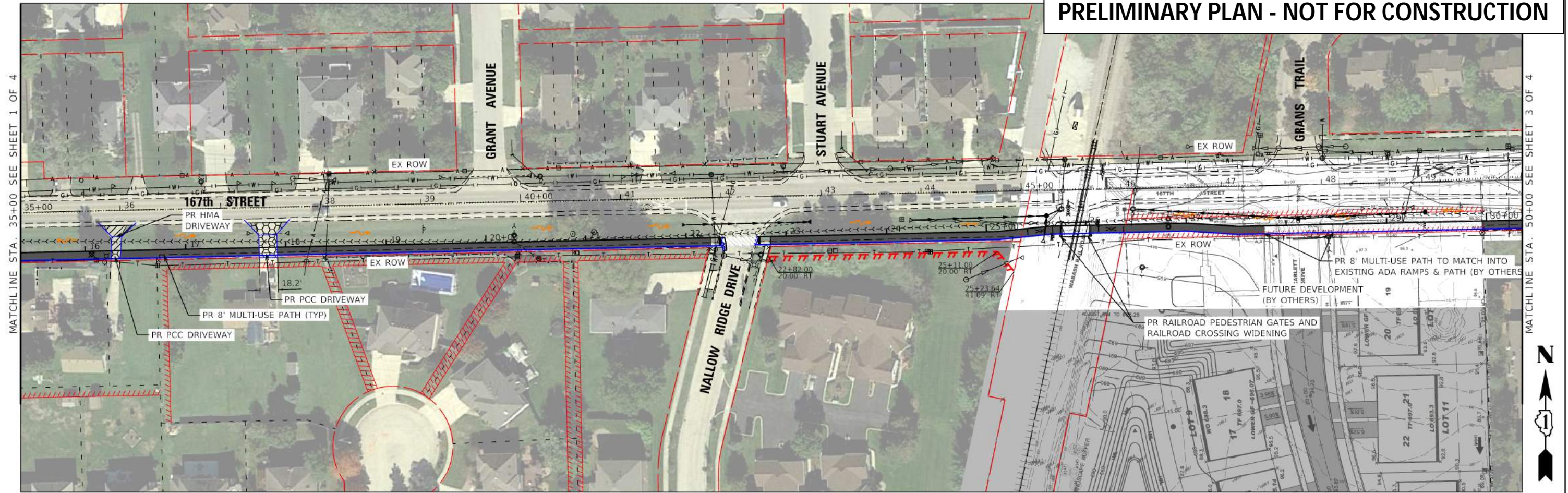
|                       |            |           |
|-----------------------|------------|-----------|
| USER NAME = chsu      | DESIGNED - | REVISED - |
| PLOT SCALE = 100'     | DRAWN -    | REVISED - |
| PLOT DATE = 9/11/2020 | CHECKED -  | REVISED - |
|                       | DATE -     | REVISED - |

|   |             |          |
|---|-------------|----------|
| STATE OF ILLINOIS<br>DEPARTMENT OF TRANSPORTATION | ORLAND PARK | ILLINOIS |
|---|-------------|----------|

|  |                     |
|--|---------------------|
| 167TH STREET MULTI-USE PATH IMPROVEMENTS |                     |
| PLAN AND PROFILE                         |                     |
| SCALE: 1"=50'                            | SHEET 1 OF 4 SHEETS |
| STA. 20+00.00                            | TO STA. 35+00.00    |

|              |                |        |              |           |
|--------------|----------------|--------|--------------|-----------|
| F.A.U. RTE.  | SECTION        | COUNTY | TOTAL SHEETS | SHEET NO. |
| 1610         | 19-00084-00-BT | COOK   | 4            | 1         |
| CONTRACT NO. |                |        |              |           |

|          |                  |
|----------|------------------|
| ILLINOIS | FED. AID PROJECT |
|----------|------------------|



MODEL: Definit  
 FILE NAME: N:\3019\19077\Drawings\Plan\19077-cta-plm-05.dwg


 V3 Companies  
 7325 Janes Avenue  
 Woodridge, IL 60517  
 630.724.9200 phone  
 630.724.9202 fax  
 www.v3co.com

|                       |            |           |
|-----------------------|------------|-----------|
| USER NAME = ehsu      | DESIGNED - | REVISED - |
| PLOT SCALE = 100'     | DRAWN -    | REVISED - |
| PLOT DATE = 9/11/2020 | CHECKED -  | REVISED - |
|                       | DATE -     | REVISED - |

|   |             |          |
|---|-------------|----------|
| STATE OF ILLINOIS<br>DEPARTMENT OF TRANSPORTATION | ORLAND PARK | ILLINOIS |
|---|-------------|----------|

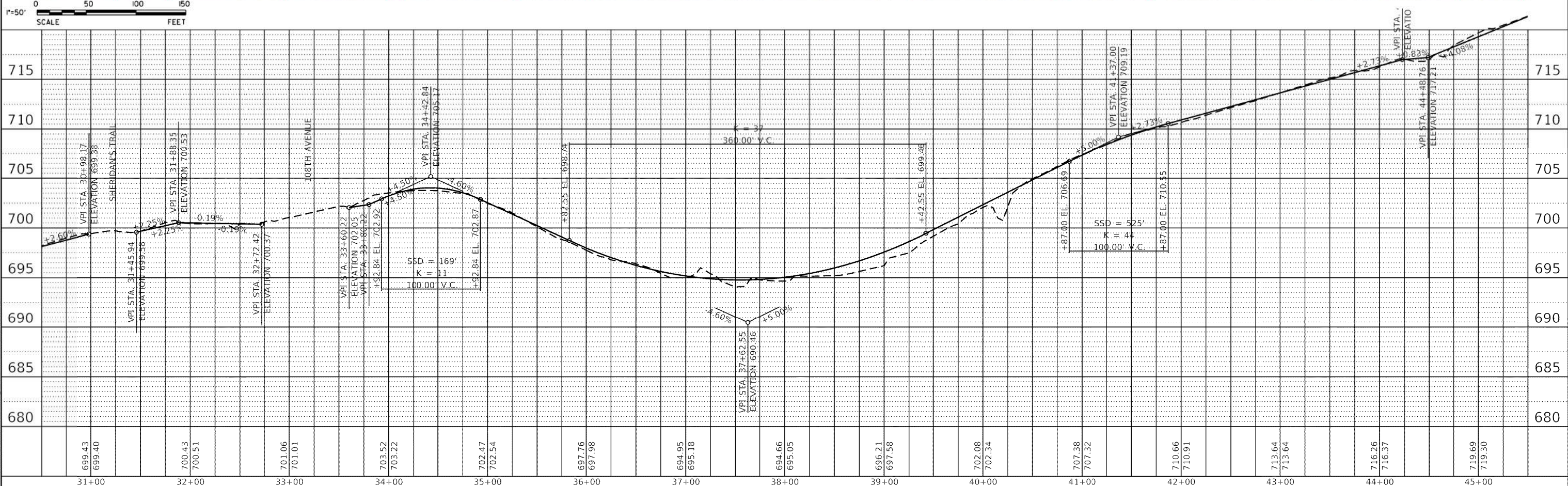
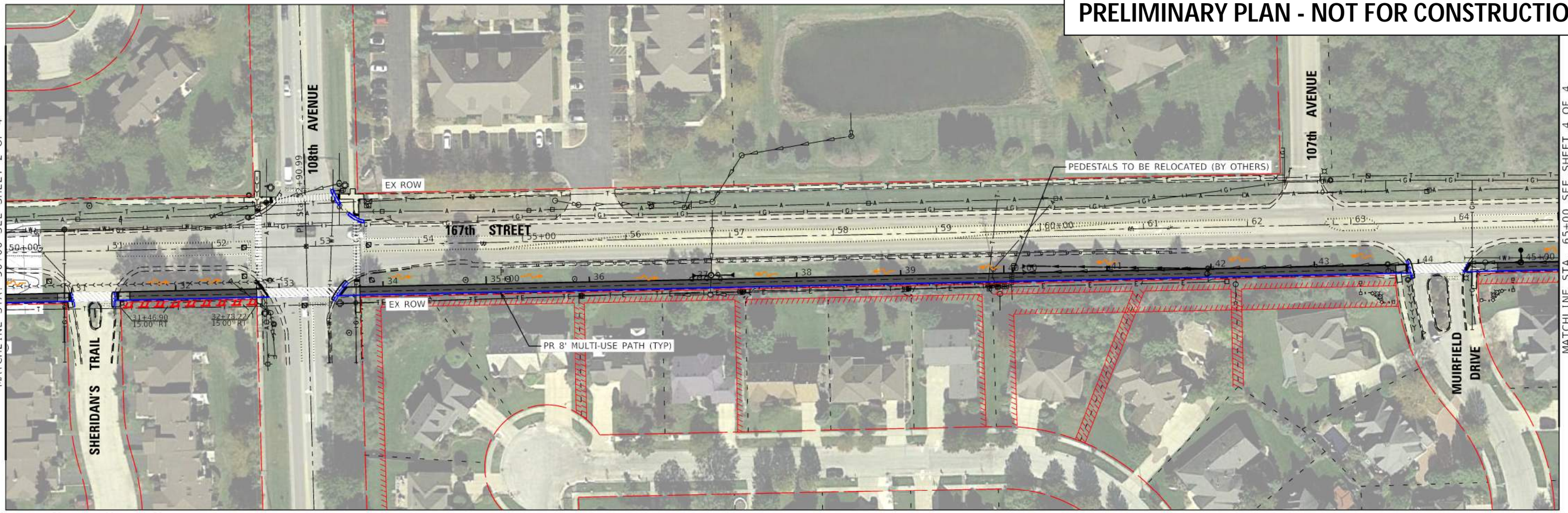
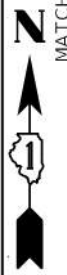
|  |                     |
|--|---------------------|
| 167TH STREET MULTI-USE PATH IMPROVEMENTS |                     |
| PLAN AND PROFILE                         |                     |
| SCALE: 1"=50'                            | SHEET 2 OF 4 SHEETS |
| STA. 35+00.00                            | TO STA. 50+00.00    |

|              |                |        |              |           |
|--------------|----------------|--------|--------------|-----------|
| F.A.U. RTE.  | SECTION        | COUNTY | TOTAL SHEETS | SHEET NO. |
| 1610         | 19-00084-00-BT | COOK   | 4            | 2         |
| CONTRACT NO. |                |        |              |           |

|          |                  |
|----------|------------------|
| ILLINOIS | FED. AID PROJECT |
|----------|------------------|

MATCHLINE STA. 50+00 SEE SHEET 2 OF 4

MATCHLINE STA. 65+00 SEE SHEET 4 OF 4



MODEL: Definit  
FILE NAME: N:\30219\19077\Drawings\Plan\CADD\_Sheets\119077-cta-pln-prj-03.dgn

**V3**  
V3 Companies  
7325 Janes Avenue  
Woodridge, IL 60517  
630.724.9200 phone  
630.724.9202 fax  
www.v3co.com

USER NAME = ehsu  
PLOT SCALE = 100'  
PLOT DATE = 9/11/2020

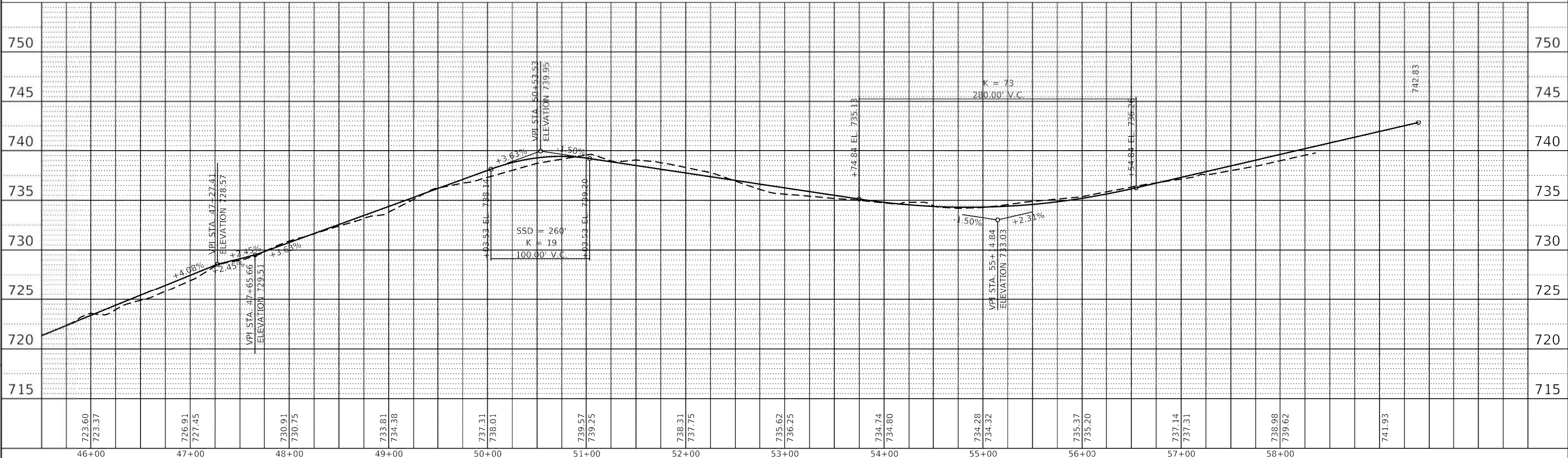
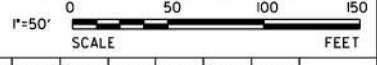
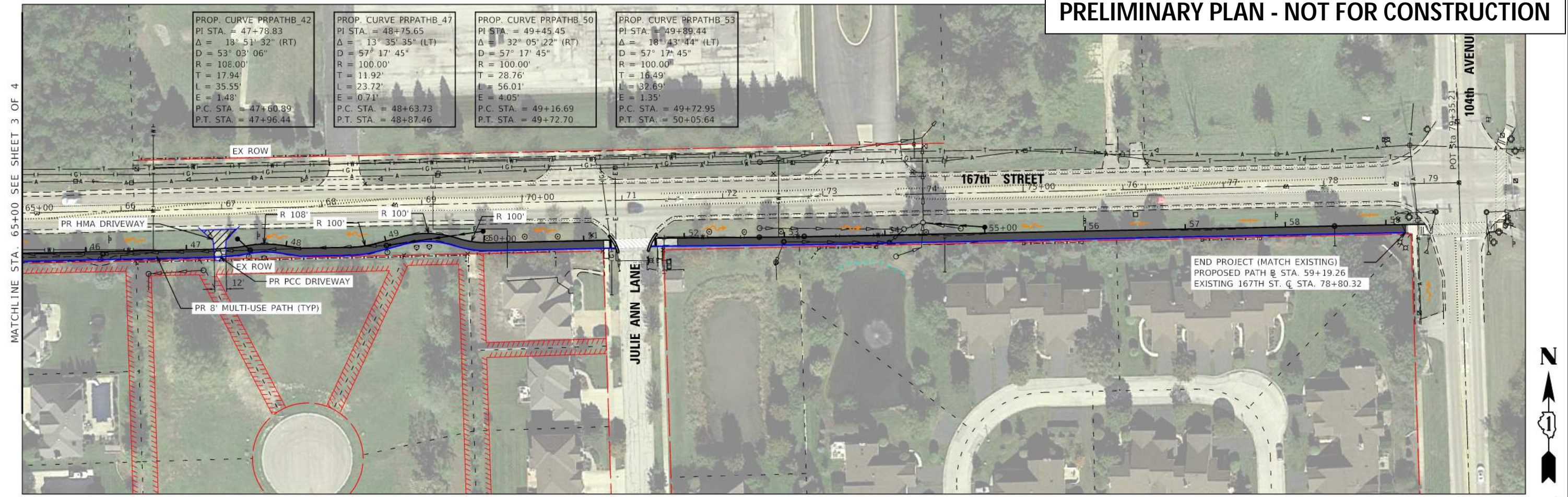
|           |           |
|-----------|-----------|
| REVISIONS | REVISIONS |
| REVISIONS | REVISIONS |
| REVISIONS | REVISIONS |
| REVISIONS | REVISIONS |

STATE OF ILLINOIS  
DEPARTMENT OF TRANSPORTATION  
ORLAND PARK ILLINOIS

167TH STREET MULTI-USE PATH IMPROVEMENTS  
PLAN AND PROFILE  
SCALE: 1"=50'  
SHEET 3 OF 4 SHEETS  
STA. 50+00.00 TO STA. 65+00.00

|                           |                |        |              |           |
|---------------------------|----------------|--------|--------------|-----------|
| F.A.U. RTE.               | SECTION        | COUNTY | TOTAL SHEETS | SHEET NO. |
| 1610                      | 19-00084-00-BT | COOK   | 4            | 3         |
| CONTRACT NO.              |                |        |              |           |
| ILLINOIS FED. AID PROJECT |                |        |              |           |

**PRELIMINARY PLAN - NOT FOR CONSTRUCTION**



MODEL: Defn.dwg  
 FILE NAME: N:\3019\19077\Drawings\Plan\167th\19077-cta-pln-04.dwg

**V3** Companies  
 7325 Janes Avenue  
 Woodridge, IL 60517  
 630.724.9200 phone  
 630.724.9202 fax  
 www.v3co.com

USER NAME = ehsu  
 PLOT SCALE = 100'  
 PLOT DATE = 9/11/2020

|            |           |
|------------|-----------|
| DESIGNED - | REVISED - |
| DRAWN -    | REVISED - |
| CHECKED -  | REVISED - |
| DATE -     | REVISED - |

STATE OF ILLINOIS  
 DEPARTMENT OF TRANSPORTATION  
 ORLAND PARK ILLINOIS

167TH STREET MULTI-USE PATH IMPROVEMENTS  
 PLAN AND PROFILE  
 SCALE: 1"=50' SHEET 4 OF 4 SHEETS STA. 65+00.00 TO STA. 79+35.21

| F.A.U. RTE.  | SECTION        | COUNTY | TOTAL SHEETS | SHEET NO. |
|--------------|----------------|--------|--------------|-----------|
| 1610         | 19-00084-00-BT | COOK   | 4            | 4         |
| CONTRACT NO. |                |        |              |           |

ILLINOIS FED. AID PROJECT